



A hand-drawn geological sketch of a rock specimen. The specimen is rectangular and divided into a grid of four vertical columns and two horizontal rows. The top row is shaded with vertical lines. The bottom row is divided into three sections: the leftmost section is labeled 'matrix', the middle section is labeled 'specimen', and the rightmost section is labeled 'matrix'. The boundaries between the specimen and the surrounding matrix are irregular and wavy. The drawing is done in pencil on a white background.

STONETALK

specstones

4

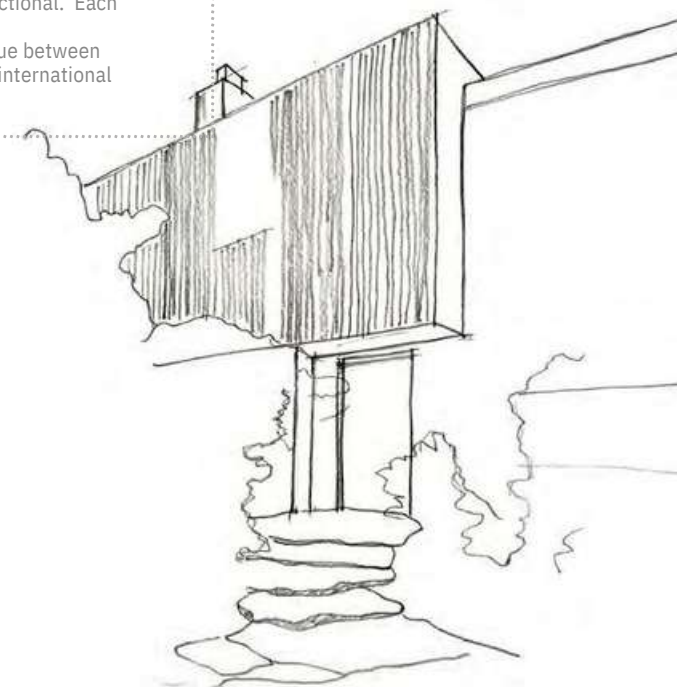
PROGETTI architettonici

STONETALK

Una riflessione sulla forza primitiva ed essenziale della pietra e sulle differenti finiture che originano dalle sue diverse lavorazioni, ecco a cosa si ispira la collezione Stonetalk. Il risultato è una pietra “archetipo”, protagonista e discreta allo stesso tempo, destinata ad assumere diversi aspetti in superficie a seconda delle lavorazioni effettuate. Stonetalk mette in scena l'autenticità e la capacità di cogliere i dettagli più sorprendenti delle lavorazioni della pietra, capace di raccontarsi e di valorizzare la fisicità dell'opera architettonica, concreta, essenziale e funzionale. Ogni lavorazione trasforma la pietra rendendola ideale a differenti utilizzi. Una collezione completa di elementi per poter creare un dialogo armonioso tra ambienti interni e spazi esterni, e tecnica a tal punto da superare tutti gli standard internazionali richiesti dalla moderna progettazione.

4 ARCHITECTURAL PROJECTS

A reflection on the primitive and minimalist form of stone and on the different finishes that originate from the different ways of working this material: this is what inspired the Stonetalk collection. The result is an “archetypal” stone, a shining star, yet discreet at the same time, destined to assume different appearances in surfaces depending on the way it is worked. Stonetalk features the authenticity and the ability to pick up and focus on the most surprising details of stone working, able to illustrate and enhance the physical side of a work of architecture: concrete, essential, functional. Each process transforms the stone, making it ideal for different uses. A complete collection of elements that creates a harmonious dialogue between indoor and outdoor spaces, and technical to the point of passing all international standards required by modern design.



3 FINITURE



MINIMAL - MINIMAL LAPPATO MINIMAL TECNICA

Dall'attenta selezione di rigorose superfici della pietra nasce la Minimal; elegante e preziosa nella versione lappata, essenziale e funzionale in quella tecnica.

MARTELLATA

MARTELLATA TECNICA



La martellata prende vita dalla lavorazione di martellatura sulle superfici più venate della pietra. La texture così assume una nuova dinamicità fluida e variegata. Nella versione tecnica la superficie è particolarmente antiscivolo, tanto da renderla perfetta per spazi esterni, pubblici e privati.

Rullata

Con un effetto scanalato e sfaccettato sulla superficie ottenuto con il processo di rullatura, questa versione assume un look tridimensionale di grande impatto visivo, ideale soprattutto a rivestimento.

DARK

GREY

WHITE

SAND

TAUPE



5 COLORI

Ciascuna versione è sviluppata in una palette cromatica di 5 nuance dove il bianco è l'elemento che, per contrasto e complementarità, si abbina sia ai colori caldi, sia alle tonalità fredde.

5 COLOURS

Each version is developed in a colour range of 5 shades, where white is the element that, by contrast and complementary nature, combines with both warm shades and with cold tones.

3 FINISHES


MINIMAL VERSION - MINIMAL LAPPATO VERSION -

MINIMAL TECNICA



From the careful selection of rigorous stone surfaces comes Minimal; elegant and precious in the semi-polished version, minimalist and functional in the technical version.

MARTELLATA VERSION - MARTELLATA TECNICA



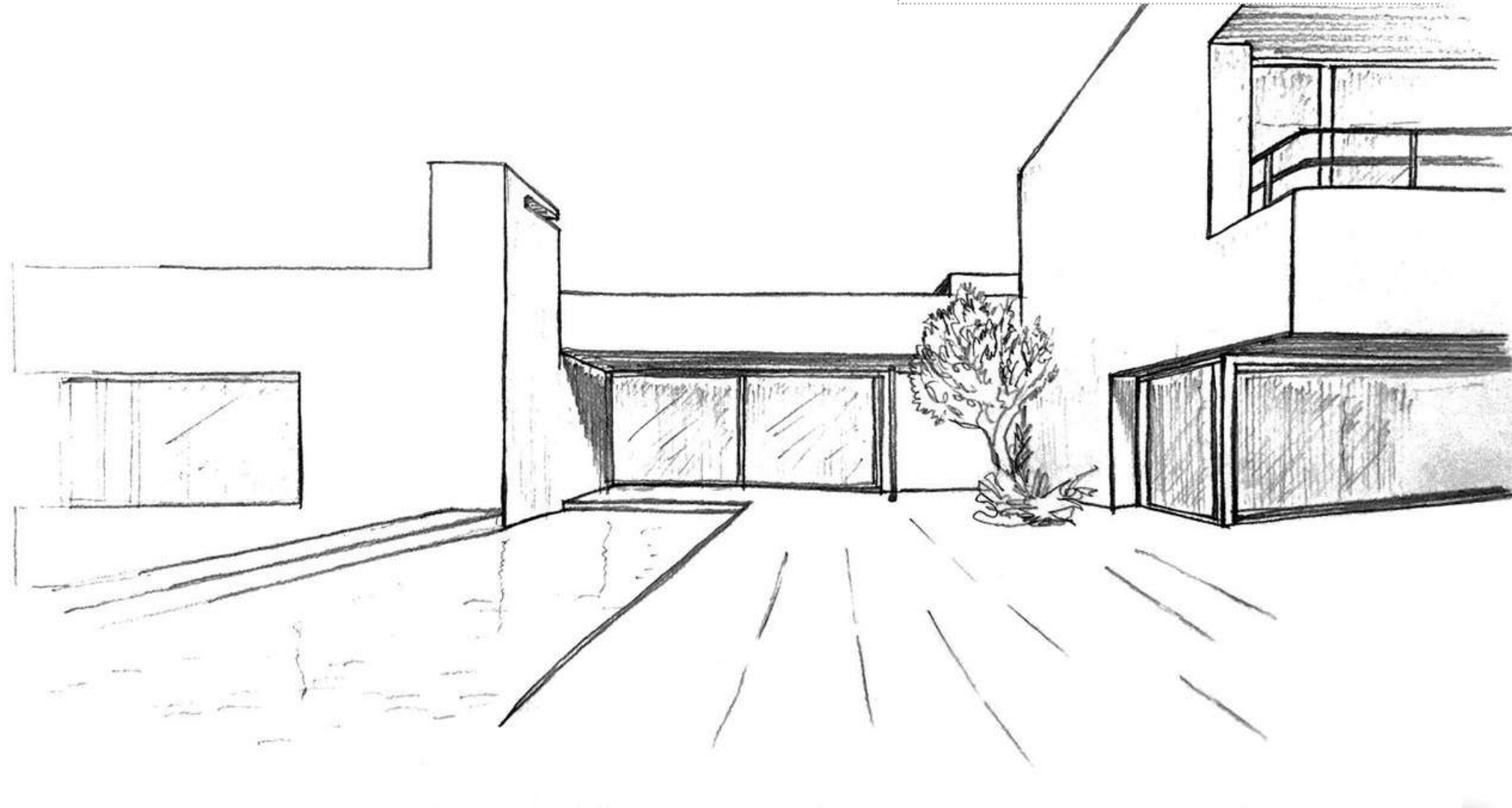
The hammered version comes about from the hammering process on the most veined surfaces of the stone. The texture thereby assumes a new fluid and varied dynamic. In the technical version, the surface has outstanding anti-slip properties, making it perfect for public and private outdoor areas.

RULLATA VERSION

With a grooved and faceted effect on the surface obtained through the rolling process, this version assumes a three-dimensional look with a strong visual impact, particularly ideal for wall tiles.

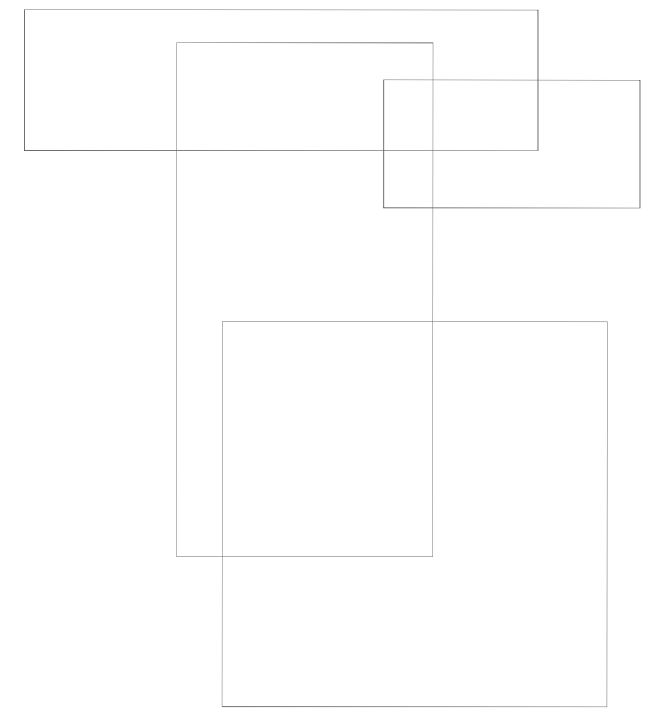
1
PROJECT
MAISON

HOME SWEET HOME

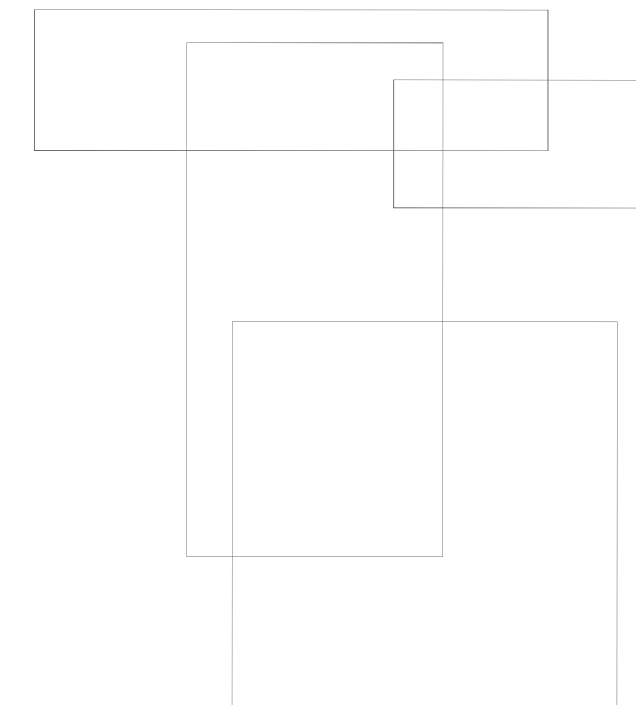




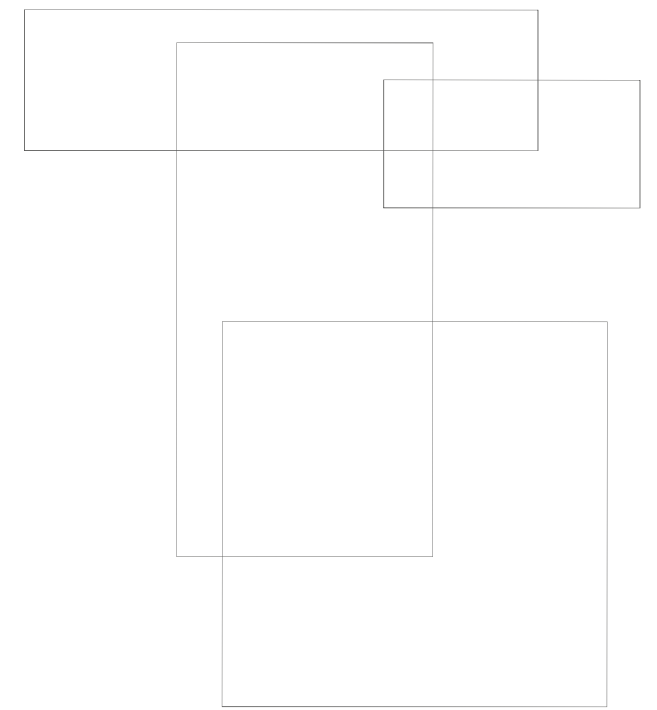
WHITE NAT. RETT. MARTELLATA TECNICA 60x120 - 23⁵/₈"x47¹/₄"
WHITE NAT. RETT. MINIMAL NATURALE 60x120 - 235/8"x47¹/₄"



WHITE NAT. RETT. MARTELLATA TECNICA 60x120 - 23⁵/₈"x47¹/₄"
WHITE NAT. RETT. MINIMAL NATURALE 60x120 - 23⁵/₈"x47¹/₄"



SAND NAT. RETT. MINIMAL NATURALE 90x90 - 357/16" x 35^{7/16}"
WHITE NAT. RETT. MINIMAL NATURALE 60x120 - 235/8" x 47^{1/4}"



SAND NAT. RETT. MINIMAL NATURALE 90x90 - 357/16"x357/16"
TAUPE NAT. RETT. MARTELLATA NATURALE 60x120 - 235/8"x47 1/4"
TAUPE NAT. RETT. RULLATA NATURALE 60x120 - 235/8"x47 1/4"



TAUPE NAT. RETT. MARTELLATA NATURALE 60x120 -1/4"
235/8"x47 SAND NAT. RETT. RULLATA NATURALE 30x60 -
1113/16"x235/8"
TAUPE NAT. RETT. MINIMAL NATURALE 60x120 -
235/8"x471/4"
TAUPE NAT. RETT. MINIMAL NATURALE 30x60 -
1113/16"x235/8"
TAUPE NAT. Mosaico Dado 30x30 - 1113/16"x1113/16"

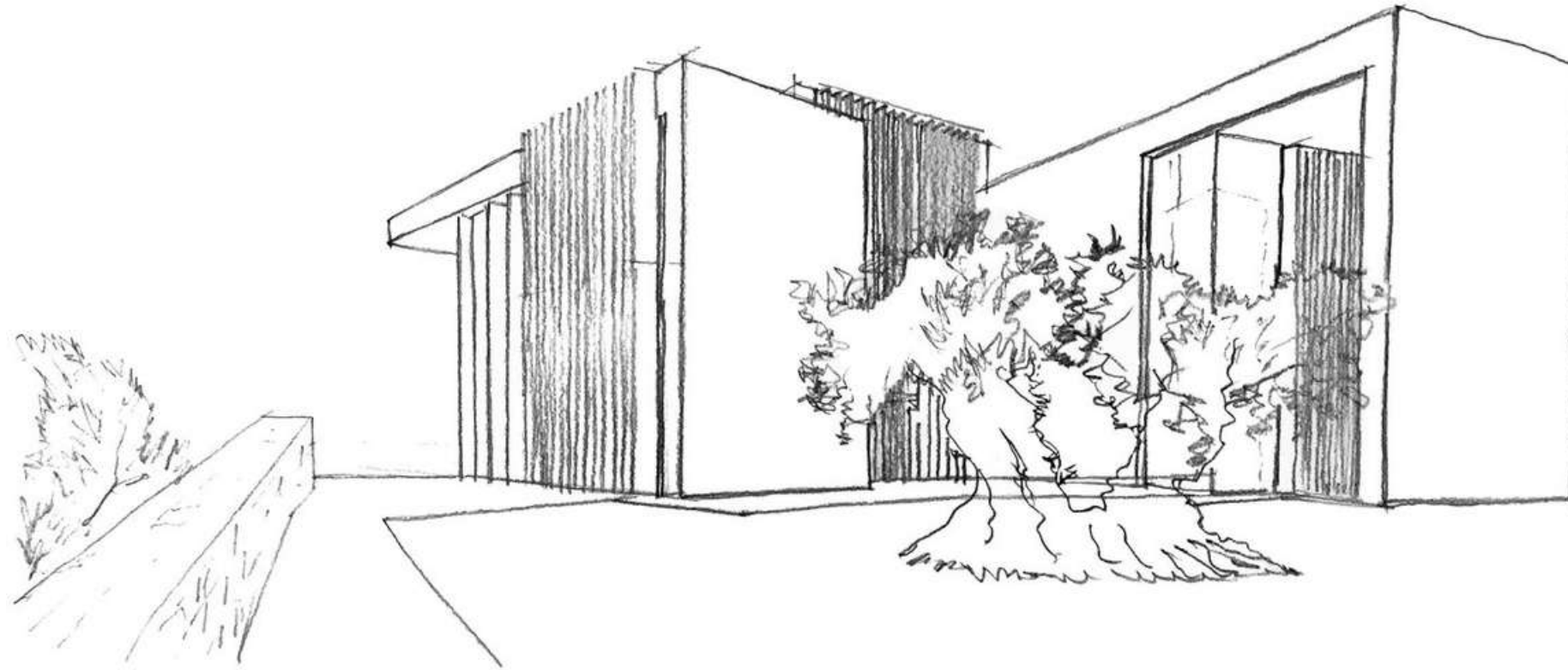


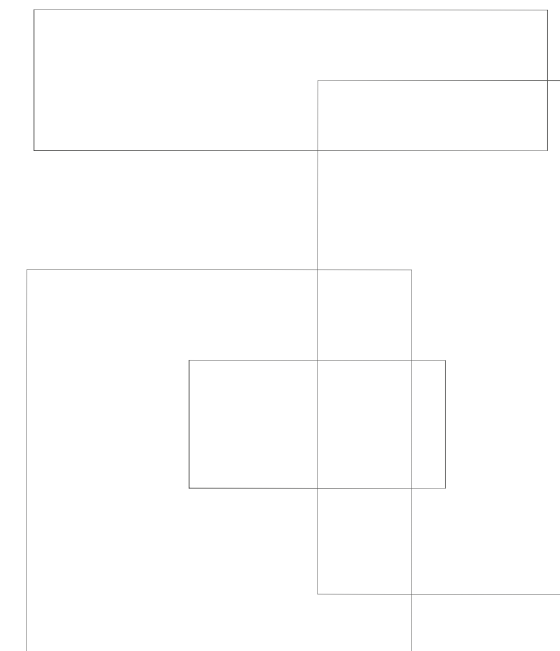
TAUPE NAT. RETT. MARTELLATA NATURALE 60x120 -1/4"
 235/8"x47 SAND NAT. RETT. RULLATA NATURALE 30x60 -
 1113/16"x235/8"
 TAUPE NAT. RETT. MINIMAL NATURALE 30x60 -
 1113/16"x235/8"



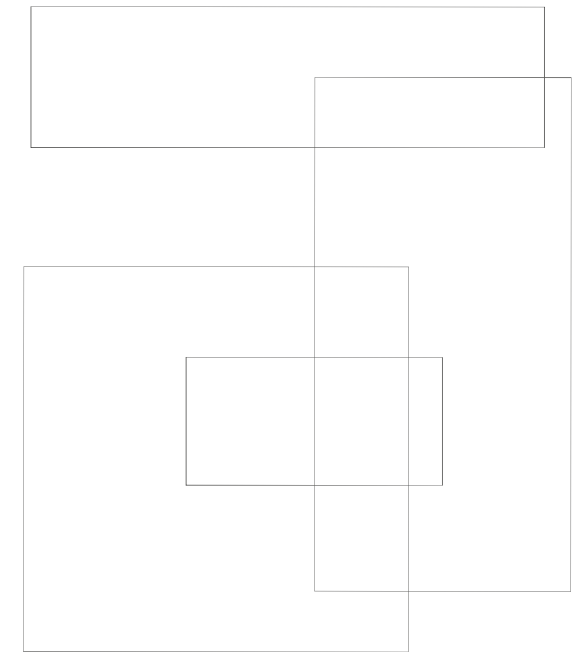
TAUPE NAT. Mosaico Dado 30x30 - 113/16"x113/16"

2
PROJECT
DOMUS
ENDLESSatmosphere





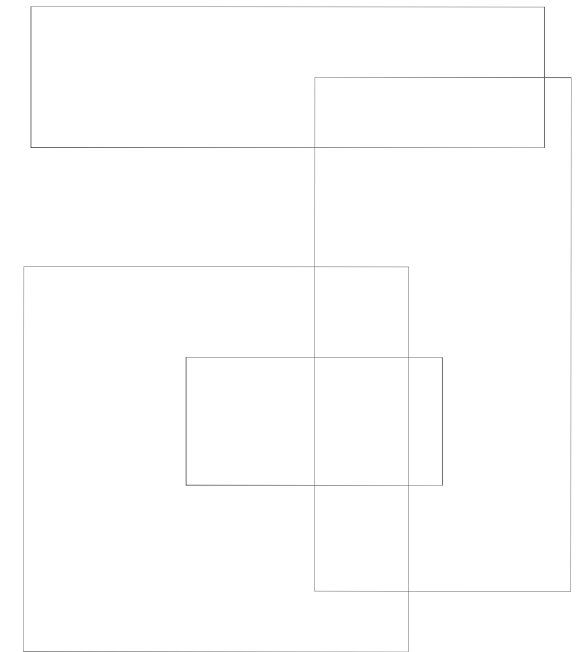
GREY NAT. RETT. MINIMAL TECNICA 60x120 - 235/8"x471/4"
GREY NAT. RETT. RULLATA NATURALE 60x120 -
235/8"x471/4"

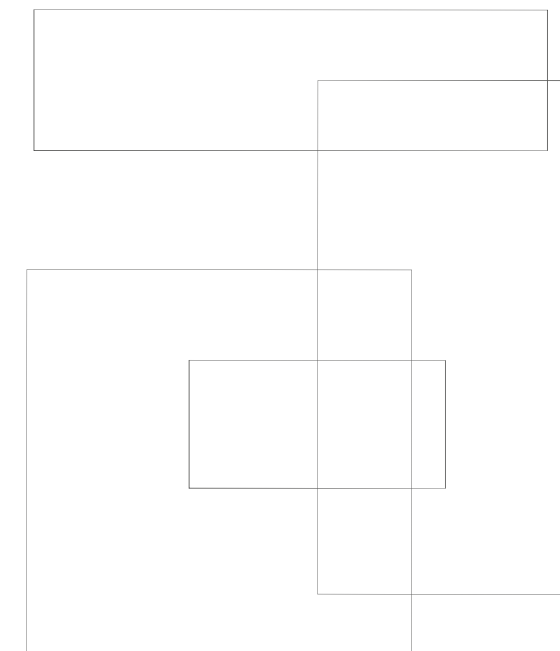


GREY NAT. RETT. MINIMAL TECNICA 60x120 - 235/8"x47 1/4"
GREY NAT. RETT. RULLATA NATURALE 60x120 - 235/8"x47 1/4"
GREY NAT. RETT. MARTELLATA TECNICA 60x120 - 235/8"x47 1/4"



GREY NAT. RETT. MARTELLATA NATURALE 60x120 -1/4"
235/8"x47 GREY NAT. RETT. RULLATA NATURALE 60x120 -
235/8"x47 1/4"

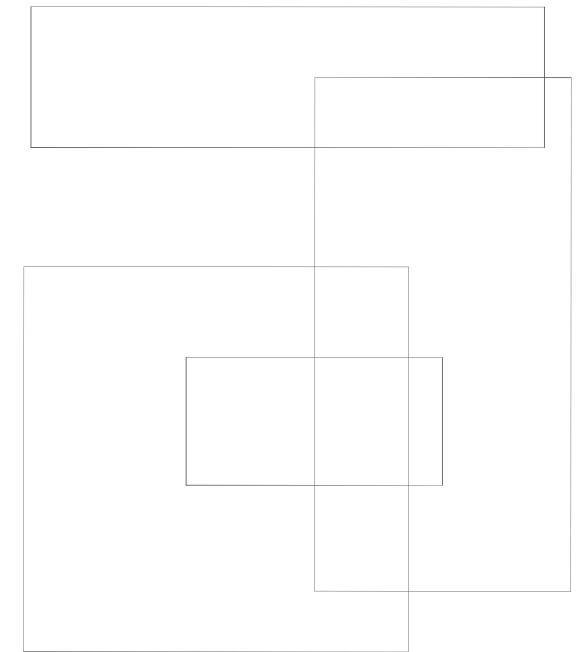




DARK NAT. RETT. MINIMAL NATURALE 60x60 - 235⁷/₈"x23
DARK NAT. RETT. MARTELLATA NATURALE 60x120 - 23x47¹/₄"
DARK NAT. RETT. RULLATA NATURALE 30x120 - 11x47¹³/₁₆"x1¹/₄"



DARK NAT. RETT. MINIMAL NATURALE 60x120 - 235/8"x471/4"
DARK NAT. RETT. MARTELLATA NATURALE 60x120 - 235/8"x471/4"
DARK NAT. RETT. RULLATA NATURALE 60x120 - 235/8"x471/4"



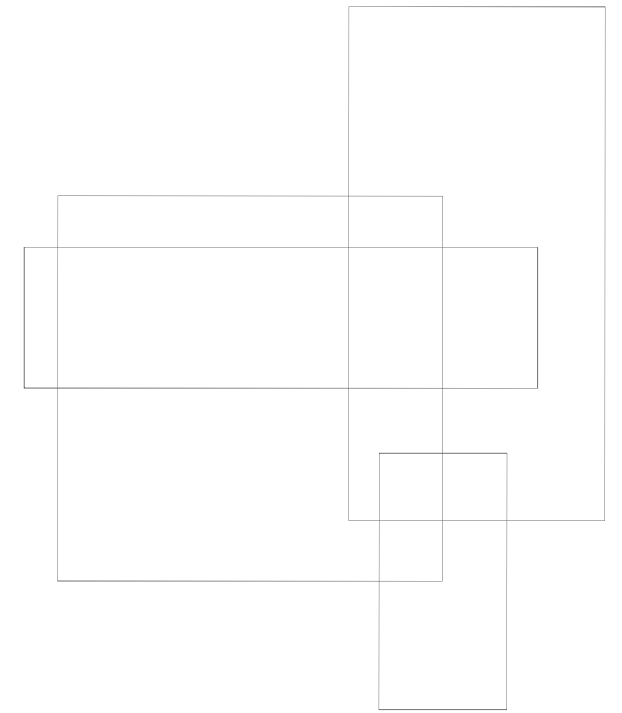
DARK NAT. RETT. RULLATA NATURALE 60x120 - 23^{5/8}"x47^{1/4}"



3
PROJECT
resort
WELCOME TECH



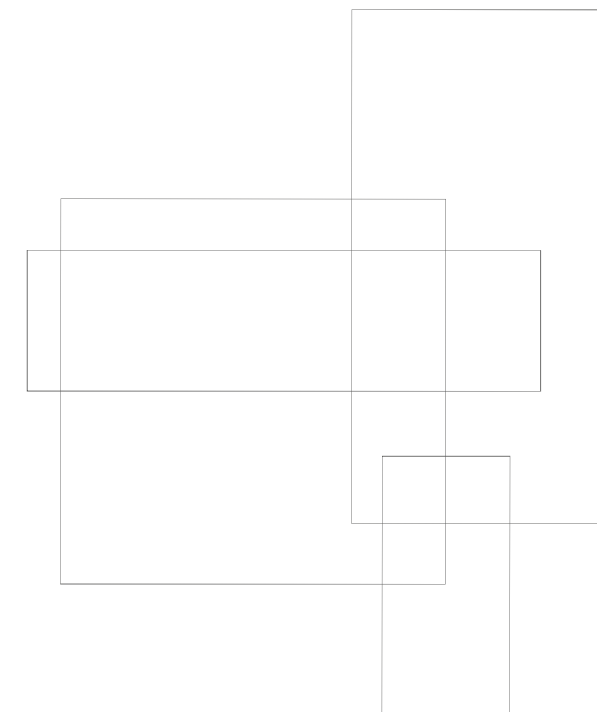
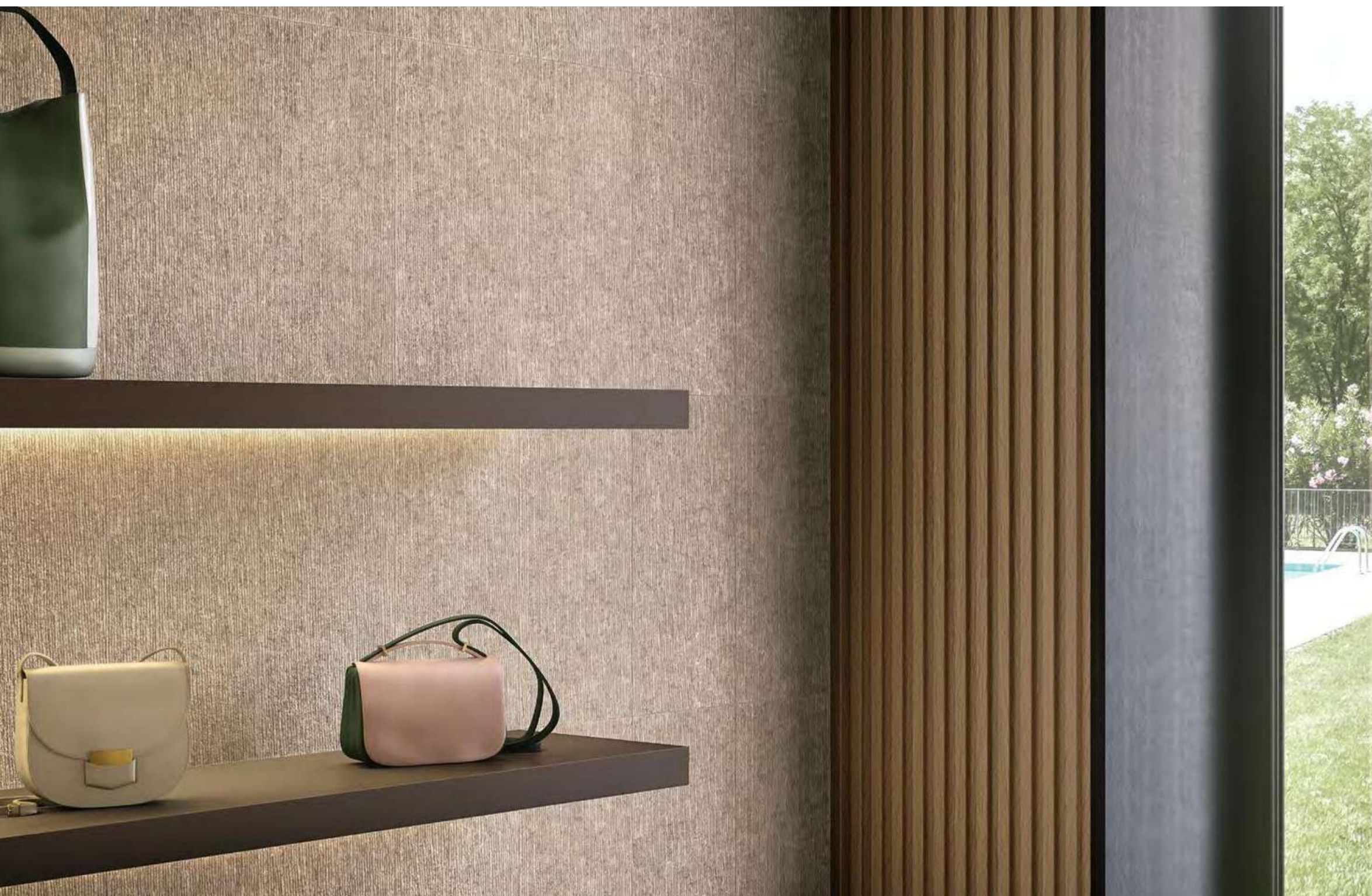
TAUPE NAT. RETT. MINIMAL NATURALE 90x90 - 357/16"x357/16"
TAUPE NAT. RETT. MARTELLATA NATURALE 60x120 - 235/8"x47"
SAND NAT. RETT. RULLATA NATURALE 60x120 - 235/8"x47 1/4"



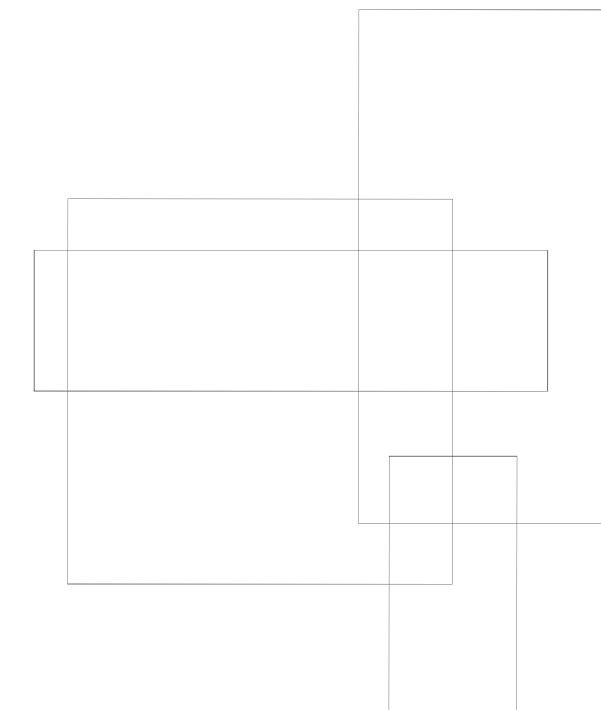
TAUPE NAT. RETT. MARTELLATA NATURALE 60x120 - 23^{5/8} x 47^{1/4}"



TAUPE NAT. RETT. MARTELLATA NATURALE 60x120 - 235/8"x47"
WHITE NAT. RETT. MARTELLATA NATURALE 60x120 - 235/8"x47"
SAND NAT. RETT. MINIMAL NATURALE 60x120 - 235/8"x47 1/4"
SAND NAT. RETT. RULLATA NATURALE 30x60 - 1113/16"x235/8"



SAND NAT. RETT. RULLATA NATURALE 30x60 - 11 ¹³/₁₆"x23 ⁵/₈"



SAND NAT. RETT. MINIMAL NATURALE 60x60 - 235/8"x23
WHITE NAT. RETT. MINIMAL NATURALE 30x60 ^{5/8"}
1113/16"x23



SAND NAT. RETT. MINIMAL TECNICA 60x120 - 235/8"x47 1/4"
SAND NAT. RETT. RULLATA NATURALE 60x120 - 235/8"x47"

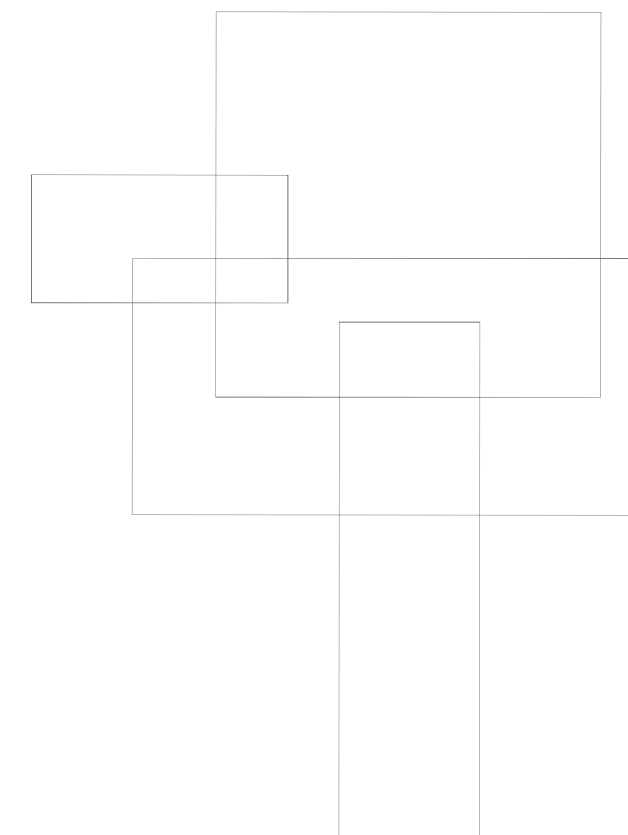
4

PROJECT

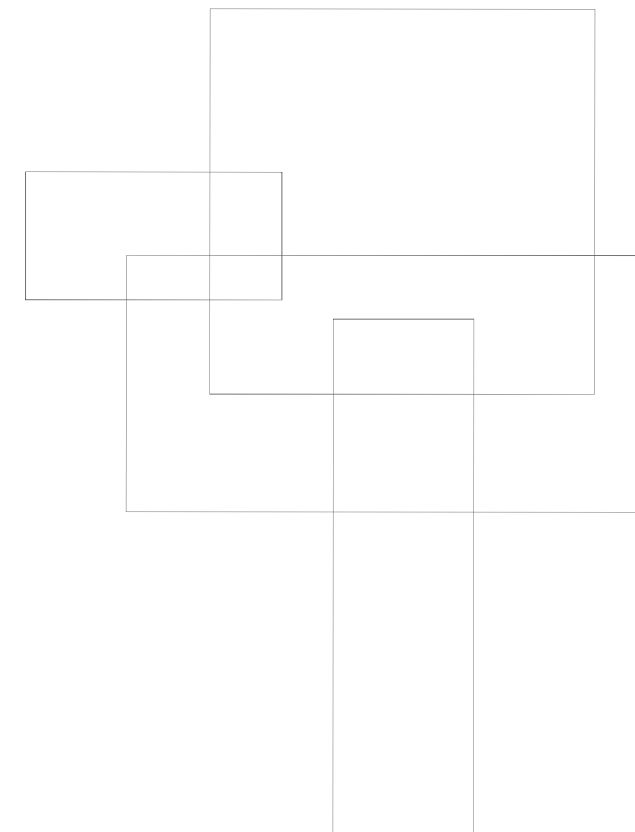
clubhouse

SHARING SPACES

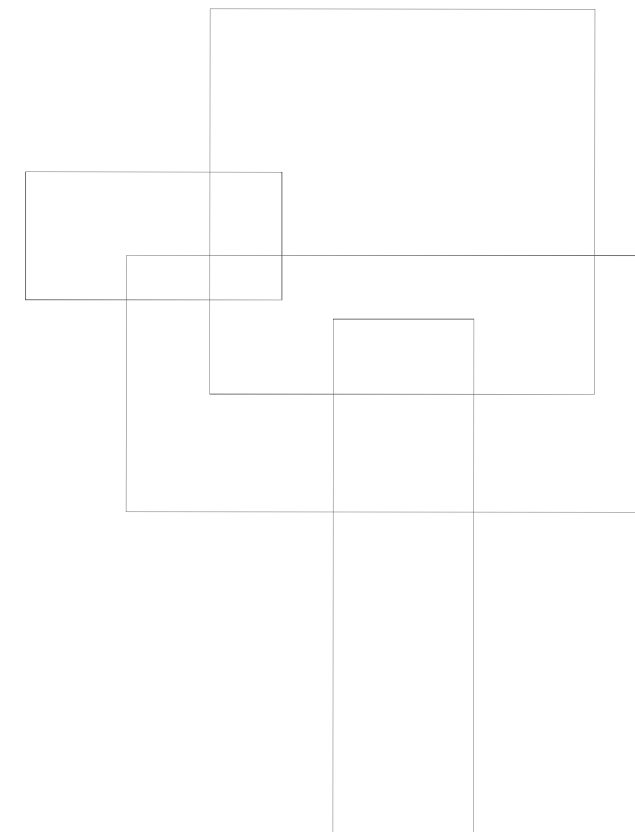




SAND NAT. RETT. MINIMAL TECNICO 30x60 - 11³/₁₆"x23⁵/₈"
TAUPE NAT. RETT. RULLATA NATURALE 60x120 - 5⁵/₈"x47¹/₄"
23



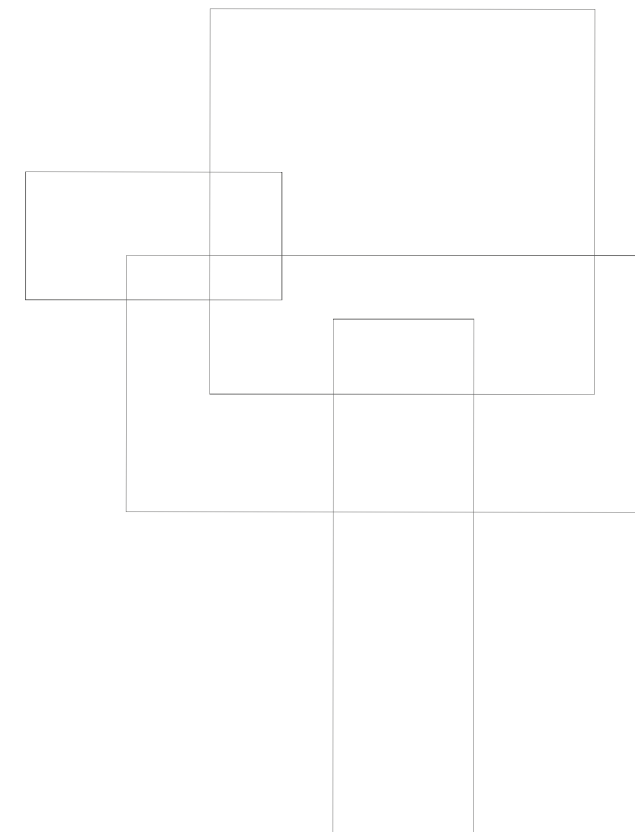
SAND NAT. RETT. MINIMAL TECNICO 30x60 - 11^{3/16}x23^{5/8}"
 TAUPE NAT. RETT. RULLATA NATURALE 60x120 - 23^{5/8}"x47^{1/4}"



DARK NAT. RETT. MINIMAL TECNICA 60x120 - 235/8"x47 1/4"
GREY NAT. RETT. RULLATA NATURALE 60x120 - 235/8"x47 1/4"



DARK NAT. RETT. MARTELLATA TECNICA ◀ 60x120 - 23^{5/8}"x47^{1/4}"



SAND NAT. RETT. MINIMAL NATURALE 60x60 - 235/8"x235/8"
SAND NAT. RETT. MARTELLATA NATURALE 60x120 - 235/8"x47 1/4"
SAND NAT. RETT. RULLATA NATURALE 60x120 - 235/8"x47 1/4"
SAND NAT. RETT. MARTELLATA NATURALE 30x60 - 11 13/16"x23 1/2"
SAND NAT. RETT. MINIMAL NATURALE 60x120 - 235/8"x47 1/4"

20MM

ESTETICA E PRESTAZIONI.

Stonetalk 20mm assicura l'equilibrio ideale tra ricercatezza estetica e prestazioni tecniche elevate nelle più svariate ambientazioni esterne.

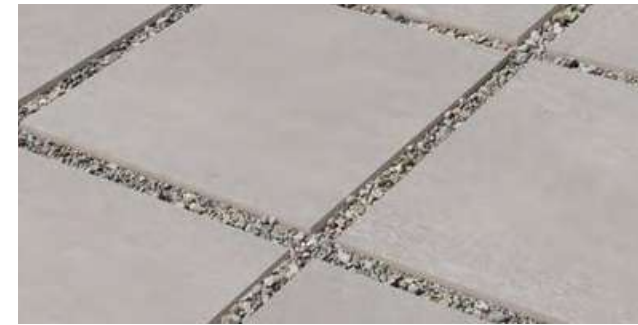
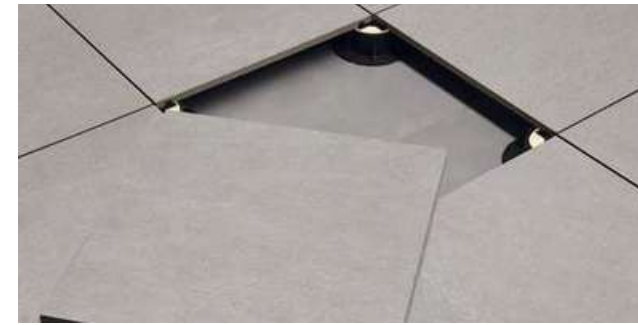
Alla possibilità di realizzare percorsi, camminamenti e altre soluzioni progettuali outdoor in piena armonia con l'ambiente circostante e in assoluta continuità con gli spazi interni, si aggiunge la garanzia di impiego di un materiale eccezionalmente resistente ai carichi e a tutti i tipi di agenti atmosferici.

Facile da posare a secco su erba, sabbia e ghiaia, Stonetalk 20mm può essere incollato anche su massetto, permettendo di realizzare pavimentazioni carrabili o altre soluzioni nell'ambito di spazi commerciali e pubblici soggetti a elevato traffico e si presta alla perfezione alla realizzazione di pavimenti sopraelevati.

Stonetalk 20mm è la soluzione ideale per progettare con stile, senza rinunciare alle esigenze tecniche richieste dall'architettura contemporanea.



GREY NAT. RETT. MARTELLATA NATURALE 50x100 - 19 11/16" x 39 3/8"
GREY NAT. RETT. MINIMAL NATURALE 60x120 - 23 5/8" x 47 1/4"



20MM

HIGH-PERFORMING GOOD LOOKS.

Cornerstone 20mm delivers the ideal combination of exquisite appearance and outstanding technical performances in the most widely varying outdoor locations.

Paths, pavements and other outdoor solutions that merge perfectly into the surrounding environment and seamlessly continue indoor design schemes can be created with a material offering exceptional resistance to loads, weather and other atmospheric factors.

Easily installed dry on grass, sand and gravel, Cornerstone 20mm can also be glued to concrete screeds for vehicle-resistant pavings, or for other projects in commercial or public contexts with heavy traffic, and is perfect for raised floors.

Cornerstone 20mm enables stylish design solutions while meeting all the technical demands of contemporary architecture.



GREY NAT. RETT. MARTELLATA NATURALE 50x100 - 19 11/16"x39 3/8"
 GREY NAT. RETT. MINIMAL NATURALE 60x120 - 23 5/8"x47 1/4"

6
FORMATI

2
DECORI

5
COLORI

3
FINITURE

6 SIZES
2 DECORS
5 COLOURS
3 FINISHES

MINIMAL



90x90 - 357/16"x357/16"
ED4M Dark Nat. Rett. ● T34
ED4L Dark Lapp. Rett. ● T52



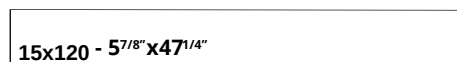
60x120 - 235/8"x471/4"
ED5R Dark Nat. Rett. ● T31
ED5Q Dark Lapp. Rett. ● T49
ED72 Dark Tecnica Rett. ● T31



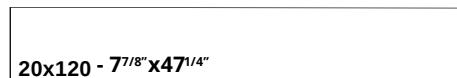
60x60 - 235/8"x235/8"
ED4Z Dark Nat. Rett. ● T17



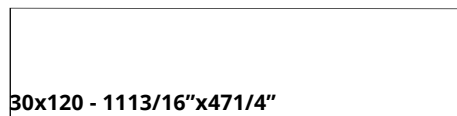
60x60 - 235/8"x235/8"
ECTV Dark Nat. Rett. ● T34



15x120 - 57/8"x471/4"



20x120 - 77/8"x471/4"



30x120 - 1113/16"x471/4"

Formati 15x120, 20x120, 30x120 sono disponibili su richiesta. Consegna in 8 settimane.
Additional formats 15x120, 20x120, 30x120 are available on request. 8 weeks delivery.



30x60 - 1113/16"x235/8"
ED54 Dark Nat. Rett. T14 ●
EEL2 Dark Lapp. Rett.* T23 ●
ED6T Dark Tecnica Rett. T14 ●

30x60 Lapp. Rett.
Sono disponibili su richiesta. Lotto minimo 1000 mq.
Available on request. 1000 Sqm minimum lot.

MINIMAL

Mosaico Dado Minimal*
Tessera - Chip 4,8x4,8 - 1 x17/8"



30x30 - 1113/16"x1113/16"
EDRD Dark Nat. A96

Listelli Sfalsati Minimal*



30x60 -5/8"
1113/16"x23
EDQN Dark Nat. ● A80

MARTELLATA



60x120 - 235/8"x471/4"
ED61 Dark Nat. Rett. ● T31
ED77 Dark Tecnica Rett. ● T31



30x60 - 1113/16"x235/8"
ED5F Dark Nat. Rett. ● T14
ED78 Dark Tecnica Rett. ● T14



50x100 -
1911/16"x393/8" ● T67
ECUX Dark Nat. Rett.

MARTELLATA

Mosaico Dado Martellata*
Tessera - Chip 4,8x4,8 - 1 x1



30x30 - 1113/16"x1113/16"
EDRJ Dark Nat. A96

Listelli Sfalsati Martellata*



30x60 -5/8"
1113/16"x23
EDQT Dark Nat. ● A80

RULLATA



60x120 - 235/8"x471/4"
ED5W Dark Nat. Rett. ● T31



30x120 -
1113/16"x471/4" ● T63
ED4U Dark Nat. Rett.

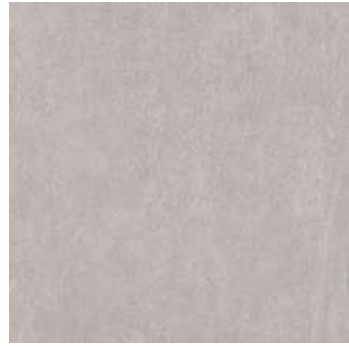


30x60 -
1113/16"x235/8" ● T14
ED59 Dark Nat. Rett.

Si consiglia la posa con fuga 2 mm. - Laying with a 2 mm-joint is recommended. - Pose recommandée avec joints de 2 mm.
Es wird eine Fugenbreite von 2 mm empfohlen. - Se recomienda la colocación con juntas de 2 mm. - Рекомендуется укладка с швом 2 мм.
Verificare l'abbinamento dei toni tra i formati differenti. - Check the colour matching between different sizes.
Vérifier l'assortiment des tonalités entre les différents formats. - Die Kombination der Farbtöne unter den verschiedenen Formaten prüfen.
Comprobar la combinación de los tonos entre los distintos formatos. - Проверьте сочетание тонов у разных форматов.

* Su rete in fibra - On fibre mesh backing - Sur filet en fibre de verre - Auf Glasfasernetz - Sobre malla de fibra - На волоконной сетке

MINIMAL



90x90 - 357/16"x357/16"
ED4K Grey Nat. Rett. ● T34
ED4J Grey Lapp. Rett. ● T52

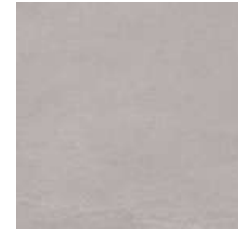


60x120 - 235/8"x471/4"
ED5P Grey Nat. Rett. ● T31
ED5N Grey Lapp. Rett. ● T49
ED71 Grey Tecnica Rett. ● T31

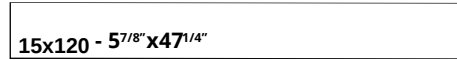


60x60 - 235/8"x235/8"
ED4Y Grey Nat. Rett. ● T17

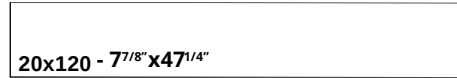
20MM



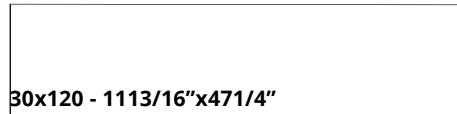
60x60 - 235/8"x235/8"
ECR9 Grey Nat. Rett. ● T34



15x120 - 57/8"x471/4"



20x120 - 77/8"x471/4"



30x120 - 1113/16"x471/4"

Formati 15x120, 20x120, 30x120 sono disponibili su richiesta. Consegna in 8 settimane.
Additional formats 15x120, 20x120, 30x120 are available on request. 8 weeks delivery.

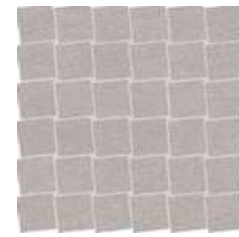


30x60 - 1113/16"x235/8"
ED53 Grey Nat. Rett. T14 ●
EEL1 Grey Lapp. Rett.* T23 ●
ED6S Grey Tecnica Rett. T14 ●

30x60 Lapp. Rett.

Sono disponibili su richiesta. Lotto minimo 1000 mq.
Available on request. 1000 Sqm minimum lot.

MINIMAL

Mosaico Dado Minimal*
Tessera - Chip 4,8x4,8 - 1 x17/8"

30x30 - 1113/16"x1113/16"
EDRC Grey Nat. A96 ●

Listelli Sfalsati Minimal*



30x60 -5/8" ● A80
1113/16"x23
EDQM Grey Nat.

MARTELLATA



60x120 - 235/8"x471/4"
ED60 Grey Nat. Rett. ● T31
ED76 Grey Tecnica Rett. ● T31



30x60 - 1113/16"x235/8"
ED5E Grey Nat. Rett. ● T14
ED6X Grey Tecnica Rett. ● T14

20MM



50x100 -
1911/16"x393/8" ● T67
ECUF Grey Nat. Rett.

MARTELLATA

Mosaico Dado Martellata*
Tessera - Chip 4,8x4,8 - 1 x1

30x30 - 1113/16"x1113/16"
EDRH Grey Nat. A96 ●

Listelli Sfalsati Martellata*



30x60 -5/8" ● A80
1113/16"x23
EDQS Grey Nat.

RULLATA



60x120 -
235/8"x471/4" ED5V Grey Nat. Rett. ● T31



30x120 -
1113/16"x471/4" ED4T Grey Nat. Rett. ● T63

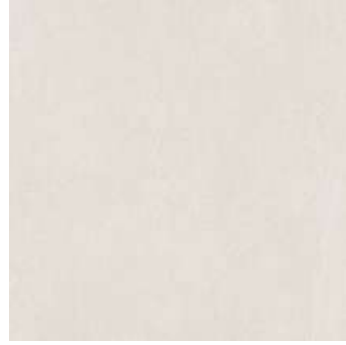


30x60 -
1113/16"x235/8" ED58 Grey Nat. Rett. ● T14

Si consiglia la posa con fuga 2 mm. - Laying with a 2 mm-joint is recommended. - Pose recommandée avec joints de 2 mm.
Es wird eine Fugenbreite von 2 mm empfohlen. - Se recomienda la colocación con juntas de 2 mm. - Рекомендуется укладка с швом 2 мм.
Verificare l'abbinamento dei toni tra i formati differenti. - Check the colour matching between different sizes.
Vérifier l'assortiment des tonalités entre les différents formats. - Die Kombination der Farbtöne unter den verschiedenen Formaten prüfen.
Comprobar la combinación de los tonos entre los distintos formatos. - Проверьте сочетание тонов у разных форматов.

* Su rete in fibra - On fibre mesh backing - Sur filet en fibre de verre - Auf Glasfasernetz - Sobre malla de fibra - На волоконной сетке

MINIMAL



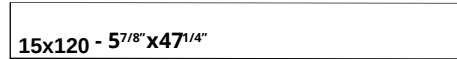
90x90 - 357/16"x357/16"
ED4D White Nat. Rett. ● T34
ED4C White Lapp. Rett. ● T52



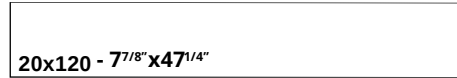
60x120 - 235/8"x471/4"
ED5H White Nat. Rett. ● T31
ED5G White Lapp. Rett. ● T49
ED6Y White Tecnica Rett. ● T31



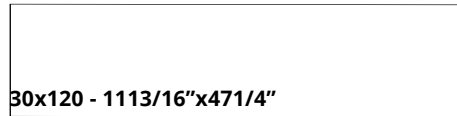
60x60 - 235/8"x235/8"
ED4V White Nat. Rett. ● T17



15x120 - 57/8"x471/4"



20x120 - 77/8"x471/4"



30x120 - 1113/16"x471/4"

Formati 15x120, 20x120, 30x120 sono disponibili su richiesta. Consegna in 8 settimane.
Additional formats 15x120, 20x120, 30x120 are available on request. 8 weeks delivery.



30x60 - 1113/16"x235/8"
ED50 White Nat. Rett. T14 ●
EELY White Lapp. Rett.* T23 ●
ED6P White Tecnica Rett. T14 ●

30x60 Lapp. Rett.
Sono disponibili su richiesta. Lotto minimo 1000 mq.
Available on request. 1000 Sqm minimum lot.

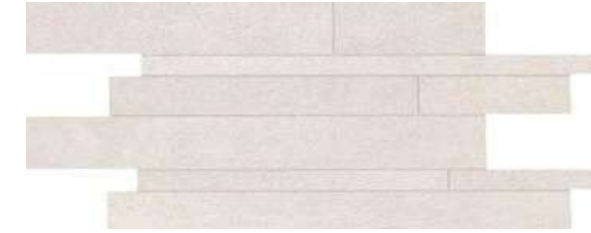
MINIMAL

Mosaico Dado Minimal*
Tessera - Chip 4,8x4,8 - 1 x17/8"



30x30 - 1113/16"x1113/16"
EDR8 White Nat. A96 ●

Listelli Sfalsati Minimal*



30x60 -5/8"
1113/16"x23
EDQJ White Nat. ● A80

MARTELLATA



60x120 - 235/8"x471/4"
ED5X White Nat. Rett. ● T31
ED73 White Tecnica Rett. ● T31



30x60 - 1113/16"x235/8"
ED5A White Nat. Rett. ● T14
ED6U White Tecnica Rett. ● T14

MARTELLATA

Mosaico Dado Martellata*
Tessera - Chip 4,8x4,8 - 1 x1



30x30 - 1113/16"x1113/16"
EDRE White Nat. A96 ●

Listelli Sfalsati Martellata*



30x60 -5/8"
1113/16"x23
EDQP White Nat. ● A80

RULLATA



60x120 - 235/8"x471/4"
ED5S White Nat. Rett. ● T31



30x120 -
1113/16"x471/4"
ED4Q White Nat. Rett. ● T63



30x60 -
1113/16"x235/8"
ED55 White Nat. Rett. ● T14

Si consiglia la posa con fuga 2 mm. - Laying with a 2 mm-joint is recommended. - Pose recommandée avec joints de 2 mm.
Es wird eine Fugenbreite von 2 mm empfohlen. - Se recomienda la colocación con juntas de 2 mm. - Рекомендуется укладка с швом 2 мм.
Verificare l'abbinamento dei toni tra i formati differenti. - Check the colour matching between different sizes.
Vérifier l'assortiment des tonalités entre les différents formats. - Die Kombination der Farbtöne unter den verschiedenen Formaten prüfen.
Comprobar la combinación de los tonos entre los distintos formatos. - Проверьте сочетание тонов у разных форматов.

* Su rete in fibra - On fibre mesh backing - Sur filet en fibre de verre - Auf Glasfasernetz - Sobre malla de fibra - На волоконной сетке

MINIMAL



90x90 - 357/16"x357/16"
ED4F Sand Nat. Rett. ● T34
ED4E Sand Lapp. Rett. ● T52



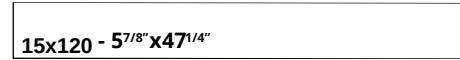
60x120 - 235/8"x471/4"
ED5K Sand Nat. Rett. ● T31
ED5J Sand Lapp. Rett. ● T49
ED6Z Sand Tecnica Rett. ● T31



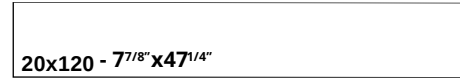
60x60 - 235/8"x235/8"
ED4W Sand Nat. Rett. ● T17



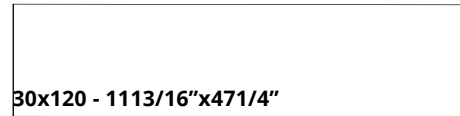
60x60 - 235/8"x235/8"
ECR8 Sand Nat. Rett. ● T34



15x120 - 57/8"x471/4"



20x120 - 77/8"x471/4"



30x120 - 1113/16"x471/4"

Formati 15x120, 20x120, 30x120 sono disponibili su richiesta. Consegna in 8 settimane.
Additional formats 15x120, 20x120, 30x120 are available on request. 8 weeks delivery.



30x60 - 1113/16"x235/8"
ED51 Sand Nat. Rett. T14 ●
EELZ Sand Lapp. Rett.* T23 ●
ED6Q Sand Tecnica Rett. T14 ●

30x60 Lapp. Rett.
Sono disponibili su richiesta. Lotto minimo 1000 mq.
Available on request. 1000 Sqm minimum lot.

MINIMAL

Mosaico Dado Minimal*
Tessera - Chip 4,8x4,8 - 1 x17/8"



30x30 - 1113/16"x1113/16"
EDR9 Sand Nat. A96 ●

Listelli Sfalsati Minimal*



30x60 -5/8"
1113/16"x23
EDQK Sand Nat. ● A80

MARTELLATA



60x120 - 235/8"x471/4"
ED5Y Sand Nat. Rett. ● T31
ED74 Sand Tecnica Rett. ● T31



30x60 - 1113/16"x235/8"
ED5C Sand Nat. Rett. ● T14
ED6V Sand Tecnica Rett. ● T14



50x100 -
1911/16"x393/8" ● T67
ECTW Sand Nat. Rett.

MARTELLATA

Mosaico Dado Martellata*
Tessera - Chip 4,8x4,8 - 1 x1



30x30 - 1113/16"x1113/16"
EDRF Sand Nat. A96 ●

Listelli Sfalsati Martellata*



30x60 -5/8"
1113/16"x23
EDQQ Sand Nat. ● A80

RULLATA



60x120 - 235/8"x471/4"
ED5T Sand Nat. Rett. ● T31



30x120 -
1113/16"x471/4" ● T63
ED4R Sand Nat. Rett.



30x60 -
1113/16"x235/8" ● T14
ED56 Sand Nat. Rett.

Si consiglia la posa con fuga 2 mm. - Laying with a 2 mm-joint is recommended. - Pose recommandée avec joints de 2 mm.
Es wird eine Fugenbreite von 2 mm empfohlen. - Se recomienda la colocación con juntas de 2 mm. - Рекомендуется укладка с швом 2 мм.
Verificare l'abbinamento dei toni tra i formati differenti. - Check the colour matching between different sizes.
Vérifier l'assortiment des tonalités entre les différents formats. - Die Kombination der Farbtöne unter den verschiedenen Formaten prüfen.
Comprobar la combinación de los tonos entre los distintos formatos. - Проверьте сочетание тонов у разных форматов.

* Su rete in fibra - On fibre mesh backing - Sur filet en fibre de verre - Auf Glasfasernetz - Sobre malla de fibra - На волоконной сетке

MINIMAL



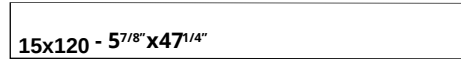
90x90 - 357/16"x357/16"
ED4H Taupe Nat. Rett. ● T34
ED4G Taupe Lapp. Rett. ● T52



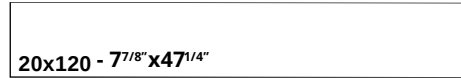
60x120 - 235/8"x471/4"
ED5M Taupe Nat. Rett. ● T31
ED5L Taupe Lapp. Rett. ● T49
ED70 Taupe Tecnica Rett. ● T31



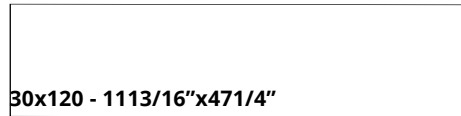
60x60 - 235/8"x235/8"
ED4X
Taupe Nat. Rett. ● T17



15x120 - 57/8"x471/4"



20x120 - 77/8"x471/4"



30x120 - 1113/16"x471/4"

Formati 15x120, 20x120, 30x120 sono disponibili su richiesta. Consegna in 8 settimane.
Additional formats 15x120, 20x120, 30x120 are available on request. 8 weeks delivery.



30x60 - 1113/16"x235/8"
ED52 Taupe Nat. Rett. T14 ●
EEL0 Taupe Lapp. Rett.* T23 ●
ED6R Taupe Tecnica Rett. T14 ●

30x60 Lapp. Rett.
Sono disponibili su richiesta. Lotto minimo 1000 mq.
Available on request. 1000 Sqm minimum lot.

MINIMAL

Mosaico Dado Minimal*
Tessera - Chip 4,8x4,8 - 1 x17/8"



30x30 - 1113/16"x1113/16"
EDRA Taupe Nat. ● A96

Listelli Sfalsati Minimal*



30x60 -5/8"
1113/16"x23
EDQL Taupe Nat. ● A80

MARTELLATA



60x120 - 235/8"x471/4"
ED5Z Taupe Nat. Rett. ● T31
ED75 Taupe Tecnica Rett. ● T31



30x60 - 1113/16"x235/8"
ED5D Taupe Nat. Rett. ● T14
ED6W Taupe Tecnica Rett. ● T14

MARTELLATA

Mosaico Dado Martellata*
Tessera - Chip 4,8x4,8 - 1 x1



30x30 - 1113/16"x1113/16"
EDRG Taupe Nat. ● A96

Listelli Sfalsati Martellata*



30x60 -5/8"
1113/16"x23
EDQR Taupe Nat. ● A80

RULLATA



60x120 - 235/8"x471/4"
ED5U Taupe Nat. Rett. ● T31



30x120 -
1113/16"x471/4"
ED4S Taupe Nat. Rett. ● T63



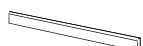
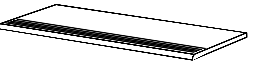

30x60 - 1113/16"x235/8"
ED57 Taupe Nat. Rett. ● T14

Si consiglia la posa con fuga 2 mm. - Laying with a 2 mm-joint is recommended. - Pose recommandée avec joints de 2 mm.
Es wird eine Fugenbreite von 2 mm empfohlen. - Se recomienda la colocación con juntas de 2 mm. - Рекомендуется укладка с швом 2 мм.
Verificare l'abbinamento dei toni tra i formati differenti. - Check the colour matching between different sizes.
Vérifier l'assortiment des tonalités entre les différents formats. - Die Kombination der Farbtöne unter den verschiedenen Formaten prüfen.
Comprobar la combinación de los tonos entre los distintos formatos. - Проверьте сочетание тонов у разных форматов.

* Su rete in fibra - On fibre mesh backing - Sur filet en fibre de verre - Auf Glasfasernetz - Sobre malla de fibra - На волоконной сетке

STONETALK




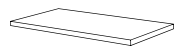


Pezzi Speciali - Trims - Pieces Speciales - Formteile - Piezas Especiales - Специальные Изделия

| | Dimensione Size | Color | | | | | Fascia di prezzo Price band |
|---|--|--------------------|--------------------|--------------------|--------------------|--------------------|-----------------------------|
| | | Taupe | Sand | White | Grey | Dark | |
|  | Minimal Nat. Rett. 7x60 - 23/4"x235/8" Pcs. Box 15 - LM x Box 9,00 | EDHJ | EDHH | EDHG | EDHK | EDHL | ● A11 |
| | Martellata Nat. Rett. 7x60 - 23/4"x235/8" Pcs. Box 15 - LM x Box 9,00 | EDHU | EDHT | EDHS | EDHV | EDHW | ● A11 |
| | Rullata Nat. Rett. 7x60 - 23/4"x235/8" Pcs. Box 15 - LM x Box 9,00 | EDHP | EDHN | EDHM | EDHQ | EDHR | ● A11 |
|  | Minimal Nat. Rett. 4,6x90 - 113/16"x35" Pcs. Box 8 - LM x Box 7,20 | EDDR | EDDQ | EDDP | EDDS | EDDT | ● A18 |
| | Minimal Nat. Rett. 33x120 - 1215/16"x47" Pcs. Box 2 - LM x Box 2,40 | EDGH | EDGE | EDGA | EDGL | EDGP | ● A82 |
| | Minimal Lapp. Rett. 33x120 - 1215/16"x47" Pcs. Box 2 - LM x Box 2,40 | EDGG | EDGD | EDG9 | EDGK | EDGN | ● A86 |
| | Minimal Tecnica Rett.* 33x120 - 1215/16"x47 1/4" Pcs. Box 2 - LM x Box 2,40 | EDGJ | EDGF | EDGC | EDGM | EDGQ | ● A82 |
| | Martellata Nat. Rett. 33x120 - 1215/16"x47 1/4" Pcs. Box 2 - LM x Box 2,40 | EDH0 | EDGY | EDGW | EDH2 | EDH4 | ● A82 |
| | Martellata Tecnica Rett.* 33x120 - 1215/16"x47 1/4" Pcs. Box 2 - LM x Box 2,40 | EDH1 | EDGZ | EDGX | EDH3 | EDH5 | ● A82 |
| | Rullata Nat. Rett. 33x120 - 1215/16"x47" Pcs. Box 2 - LM x Box 2,40 | EDGT | EDGS | EDGR | EDGU | EDGV | ● A82 |
| | Minimal Nat. Rett. 33x120x3,2x3,2 1215/16"x47 1/4"x11 1/4" x1 Pcs. Box 2 - LM x Box 2,40 | EDDW | EDDV | EDDU | EDDX | EDDY | ● A98 |
| | Martellata Nat. Rett. 33x120x3,2x3,2 1215/16"x47 1/4"x11 1/4" x1 Pcs. Box 2 - LM x Box 2,40 | EDE6 | EDE5 | EDE4 | EDE7 | EDE8 | ● A98 |
| | Rullata Nat. Rett. 33x120x3,2x3,2 1215/16"x47 1/4"x11 1/4" x1 Pcs. Box 2 - LM x Box 2,40 | EDE1 | EDE0 | EDDZ | EDE2 | EDE3 | ● A98 |
|  | Minimal Nat. Rett. 33x120x3,2x3,2 1215/16"x47 1/4"x11 1/4" x1 Pcs. Box 1 - LM x Box 1,20 | Dx - Right EDCW | Dx - Right EDCU | Dx - Right EDCS | Dx - Right EDCY | Dx - Right EDD0 | ● A104 |
| | | Sx - Left EDCX | Sx - Left EDCV | Sx - Left EDCT | Sx - Left EDCZ | Sx - Left EDD1 | |
| | Martellata Nat. Rett. 33x120x3,2x3,2 1215/16"x47 1/4"x11 1/4" x1 Pcs. Box 1 - LM x Box 1,20 | Dx - Right EDDH | Dx - Right EDDF | Dx - Right EDDE | Dx - Right EDDK | Dx - Right EDDM | ● A104 |
| | | Sx - Left EDDH | Sx - Left EDDF | Sx - Left EDDE | Sx - Left EDDK | Sx - Left EDDM | |
| | Rullata Nat. Rett. 33x120x3,2x3,2 1215/16"x47 1/4"x11 1/4" x1 Pcs. Box 1 - LM x Box 1,20 | Dx - Right EDD6 | Dx - Right EDD4 | Dx - Right EDD2 | Dx - Right EDD8 | Dx - Right EDDA | ● A104 |
| | | Sx - Left EDD7 | Sx - Left EDD5 | Sx - Left EDD3 | Sx - Left EDD9 | Sx - Left EDDC | |

STONETALK

20MM

Pezzi Speciali - Trims - Pieces Speciales - Formteile - Piezas Especiales - Специальные Изделия

| | Dimensione Size | Color | | | | Fascia di prezzo Price band | | |
|---|---|--------------------|-------------------|--------------------|-------------------|-----------------------------|-------------------|-------|
| | | Sand | Grey | Dark | | | | |
|  | Minimal Nat. Rett. 33x60x5 1215/16"x235/8"x115/16" Pcs. Box 2 - LM x Box 1,20 | EENK | EENL | EELA | | ● A68 | | |
| | Martellata Nat. Rett. 33x100x5 1215/16"x393/8"x115/16" Pcs. Box 2 - LM x Box 2 | EEMD | EEMG | EEMK | | ● A91 | | |
|  | Minimal Nat. Rett. 33x60x5 1215/16"x235/8"x115/16" Pcs. Box 2 - LM x Box 1,20 | Dx - Right EEK6 | Sx - Left EEK7 | Dx - Right EEK8 | Sx - Left EEK9 | Dx - Right EELC | Sx - Left EELD | ● A90 |
| | Martellata Nat. Rett. 33x100x5 1215/16"x393/8"x115/16" Pcs. Box 2 - LM x Box 2 | Dx - Right EEME | Sx - Left EEMF | Dx - Right EEMH | Sx - Left EEMJ | Dx - Right EEML | Sx - Left EEMM | ● A99 |
|  | Minimal Nat. Rett. 33x60x2,5 1215/16"x235/8"x15/16" Pcs. Box 2 - LM x Box 1,20 | EELE | | EELH | | EELL | | ● A72 |
| | Martellata Nat. Rett. 33x100x2,5 1215/16"x393/8" x15/16" Pcs. Box 2 - LM x Box 2 | EEL3 | | EEL6 | | EEL9 | | ● A91 |
|  | Minimal Nat. Rett. 33x60x2,5 1215/16"x235/8"x15/16" Pcs. Box 2 - LM x Box 1,20 | Dx - Right EELF | Sx - Left EELG | Dx - Right EELJ | Sx - Left EELK | Dx - Right EELM | Sx - Left EELN | ● A90 |
| | Martellata Nat. Rett. 33x100x2,5 1215/16"x393/8" x15/16" Pcs. Box 2 - LM x Box 2 | Dx - Right EEL4 | Sx - Left EEL5 | Dx - Right EEL7 | Sx - Left EEL8 | Dx - Right EEMA | Sx - Left EEMC | ● A99 |
|  | Minimal Nat. Rett. 33x60 - 1215/16"x235/8" Pcs. Box 2 - LM x Box 1,20 | EELP | | EELQ | | EELR | | ● A66 |
| | Martellata Nat. Rett. 33x100 - 1215/16"x393/8" Pcs. Box 2 - LM x Box 2 | EELV | | EELW | | EELX | | ● A89 |
|  | Minimal Nat. Rett. 16,5x60 - 61/2"x235/8" Pcs. Box 2 - LM x Box 1,20 | EEK3 | | EEK4 | | EEK5 | | ● A29 |
| | Martellata Nat. Rett. 16,5x100 - 61/2"x393/8" Pcs. Box 4 - LM x Box 4 | EELS | | EELT | | EELU | | ● A56 |

P.60

20MM

ESTHÉTIQUE ET PERFORMANCE.
Stonetalk 20mm instaure l'équilibre idéal entre raffinement esthétique et haute performance technique dans les contextes les plus disparates. Il est ainsi possible de réaliser des parcours, des cheminements et d'autres projets extérieurs en totale harmonie avec le milieu environnant et en continuité visuelle avec l'intérieur. De plus, la matière assure une résistance exceptionnelle aux charges et à tous les agents atmosphériques. Facile à poser à sec sur gazon, sur sable et sur gravier, Stonetalk 20mm se colle aussi sur chape pour composer des sols carrossables ou d'autres solutions dans les espaces commerciaux et publics exposés à trafic intense. Le produit convient également parfaitement à la mise en place de planchers surélevés. Stonetalk 20mm est le nec plus ultra pour donner corps à des projets de classe, tout en remplissant les critères techniques de l'architecture contemporaine.

P.65

6 formats
3 decors
5 couleurs
3 finitions

P.60

20MM

ÄSTHETIK UND LEISTUNGEN.
Stonetalk 20mm gewährleistet den perfekten Einklang zwischen ausgefeilter Ästhetik und hohen technischen Leistungen in verschiedensten Außenräumen. Die Möglichkeit zu Gestaltungslösungen für den Außenbereich wie etwa Fahr- und Gehwege, die sich harmonisch in die Umgebung einfügen und eine nahtlose optische Einheit mit den Innenräumen bilden, ist mit der Garantie eines außergewöhnlich belastungsfähigen und witterungsbeständigen Materials verbunden. Leicht verlegbar im Gras-, Sand- oder Kiesbett, kann Stonetalk 20mm auch auf Estrich verklebt werden. Die Kollektion eignet sich nicht nur für Bodenbeläge oder andere Lösungen in stark frequentierten gewerblichen und öffentlichen Bereichen, sondern ist auch zur Erstellen von Doppelböden perfekt. Stonetalk 20mm ist die ideale Lösung für eine stilichere Gestaltung und erfüllt die technischen Anforderungen der modernen Architektur.

P.65

6 formate
3 dekore
5 farben
3 oberflächen

P.60

20MM

ESTÉTICA Y PRESTACIONES.
Stonetalk 20mm asegura el equilibrio ideal entre refinamiento estético y prestaciones técnicas elevadas en las más diversas ambientaciones exteriores. A la posibilidad de realizar carriles, caminos y otras soluciones proyectivas exteriores en plena armonía con el entorno y dando continuidad a los espacios interiores, se suma la garantía de uso de un material excepcionalmente resistente a las cargas y a toda clase de agentes atmosféricos. Fácil de colocar en seco sobre hierba, arena y grava, Stonetalk 20mm también se puede encolar sobre la capa de relleno, permitiendo disponer pavimentaciones transitables u otras soluciones en el ámbito de espacios comerciales y públicos sometidos a un tráfico intenso y se presta a la perfección a la realización de pavimentos sobreelevados. Stonetalk 20mm es la solución ideal para proyectar con estilo, sin renunciar a las exigencias técnicas requeridas por la arquitectura contemporánea.

P.65

6 tamanos
3 decorados
5 colores
3 acabados

P.60

20MM

ЭФФЕКТНАЯ ЭСТЕТИКА И ВЫСОКИЕ ХАРАКТЕРИСТИКИ.
Stonetalk 20mm гарантирует достижение идеального равновесия между эстетической изысканностью и высокими техническими характеристиками в самых разнообразных наружных оформлениях. К возможности создания дорожек, тротуаров и других проектных решений для наружных пространств в полной гармонии с окружающей средой и с полной взаимопреемственностью с внутренними пространствами добавляется гарантия использования материала, который чрезвычайно устойчив к нагрузкам и всем типам атмосферного воздействия. Материал Stonetalk 20mm легко укладывается всухую на траву, песок и щебень, а также его можно наклеивать на бетонную стяжку, что позволяет изготавливать полы, пригодные для движения транспортных средств, или же другие решения на торговых и общественных объектах с высокой интенсивностью движения, а кроме того, он может великолепно использоваться для изготовления фальшполов. Stonetalk 20mm - это наилучшее решение для проектирования с хорошим стилем, не отказываясь от технических, необходимых, которые востребованы современной архитектурой.

P.65

6 форматы
3 декоры
5 цвета
3 отделки

specstones

www.specstonesinc.com

415-684-1355

1500B Burke Ave. San Francisco

I colori e le caratteristiche estetiche dei materiali illustrati nel presente catalogo sono da ritenersi puramente indicativi.

Le misure dei prodotti qui indicate si intendono nominali e come i pesi ed i colori subiscono le variazioni tipiche del processo ceramico. Ergon si riserva la facoltà di modificare in qualunque momento senza preavviso le caratteristiche tecniche, estetiche e i materiali presentati.

Tali caratteristiche non sono comunque vincolanti nei termini legali.

Colours and optical features of the materials illustrated in this catalogue are to be regarded as mere indications.

Product sizes indicated are nominal and like weights and colours undergo the typical variations of the ceramic process.

Ergon reserves the right to change the technical and optical features of the materials illustrated at any time and without notice. These features are not legally binding.