

icon

TRAVERTINE



specstones

icon
TRAVERTINE

TRAVERTINE HAS ALWAYS BEEN
ONE OF THE MOST WIDELY USED
MATERIALS IN CLASSIC AND
CONTEMPORARY WORKS OF
ARCHITECTURE.

IT HAS BECOME A FAMILIAR PART
OF OUR URBAN AND RESIDENTIAL
SCENE, AND ITS TACTILE BEAUTY
HAS BECOME AN ICON OF REFINED,
ELEGANT EXCELLENCE FOR
OUTDOOR PAVINGS AND WALL
COVERINGS.

specstones

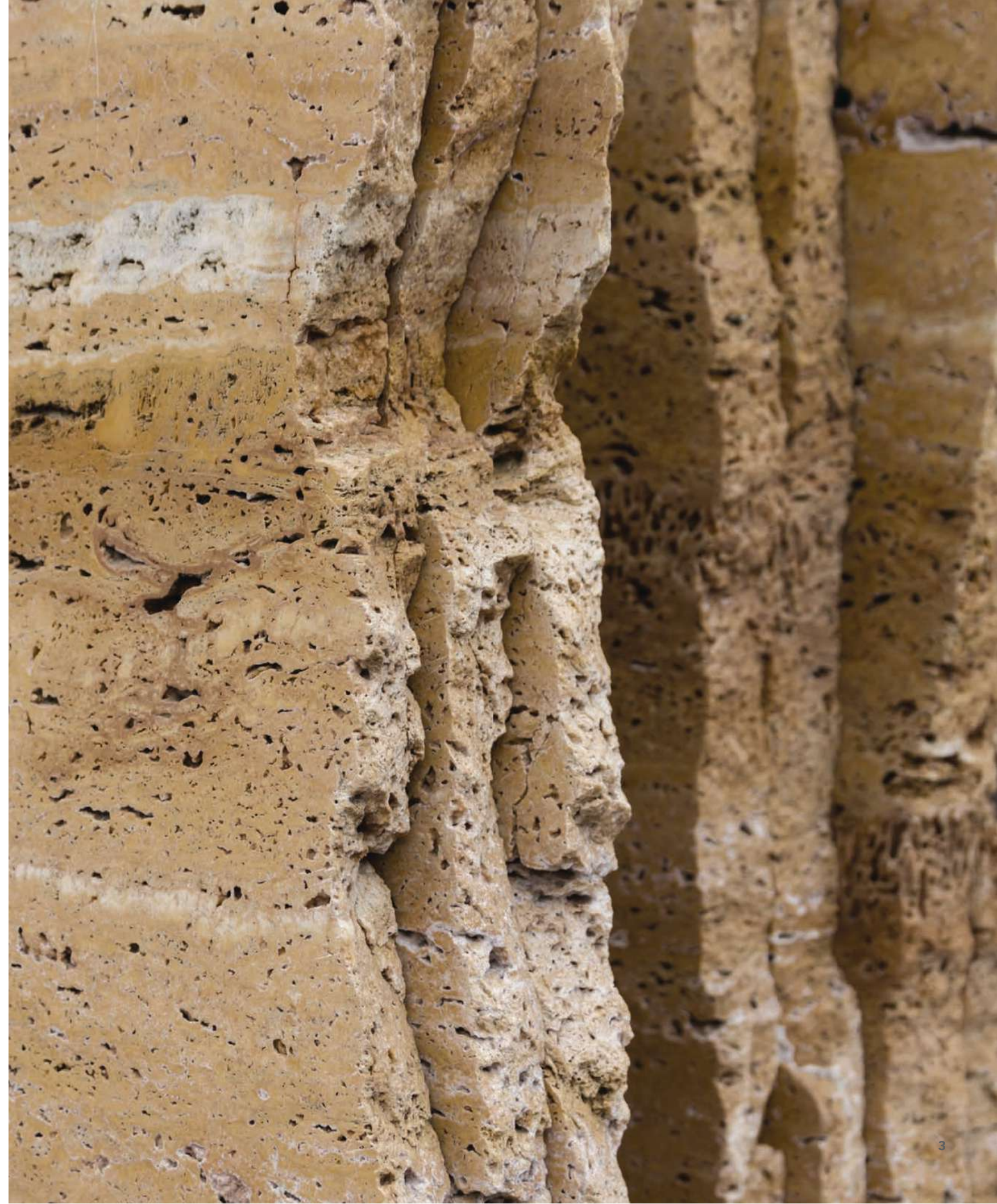
icon

TRAVERTINE

THE ICON TRAVERTINE RANGE PERFECTLY COMBINES THE HIGH TECHNICAL STANDARDS OF OUR PORCELAIN STONEWARES AND THE AESTHETIC APPEAL OF TRAVERTINES, RICH IN TEXTURED DETAILS AND DISTINCTIVE FEATURES.

ALL SURFACES ARE SUITABLE FOR HEAVY FOOT TRAFFIC AND FOR USE ON OUTDOOR PATHWAYS EXPOSED TO VERY WET CONDITIONS, MAKING THEM SUITABLE FOR ANY OPEN-AIR APPLICATION.

THE RANGE COMPRISES A NUMBER OF LOOKS AND STRUCTURES, FROM THE MORE NATURAL COLOURS, WITH SUBTLE VEIN PATTERNS, OF VEIN CUT AND CROSS CUT ITALIANO, TO THE MORE STRONGLY TEXTURED CROSS CUT PERUVIANO, WITH THE STRIKING COLOUR CONTRASTS BETWEEN BLOCKS AND THE STRONG VEINING TYPICAL OF TRAVERTINE FROM THE ANDES.

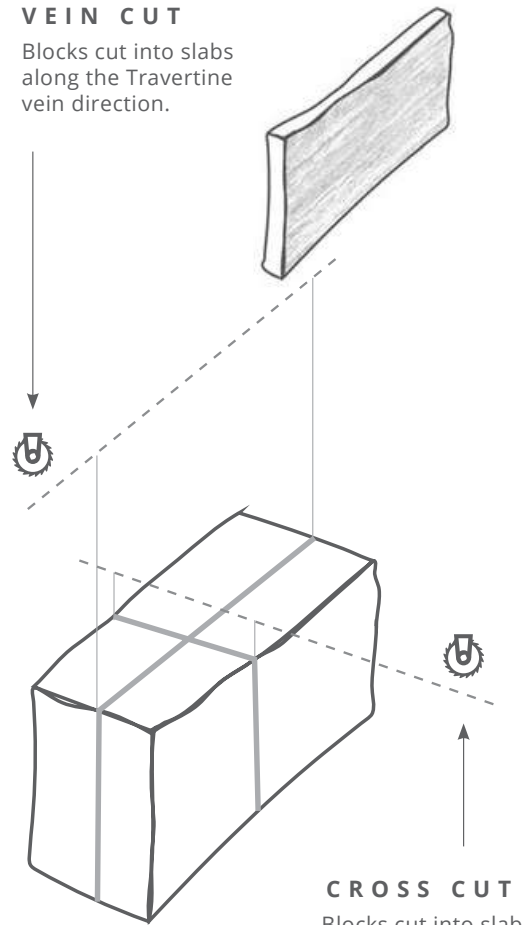


icon
TRAVERTINE



VEIN CUT

Blocks cut into slabs along the Travertine vein direction.



CROSS CUT

Blocks cut into slabs across the Travertine vein direction.

**CROSS CUT
TIVOLI'S**

233"x478"

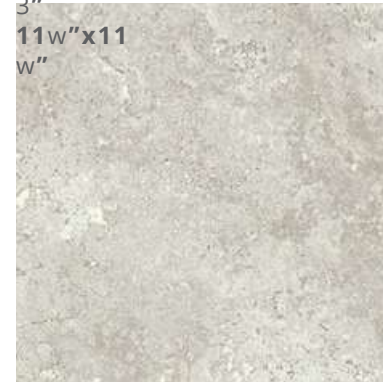
233"x233"

11w"x23"

3"

11w"x11"

w"



TIVOLI'S AVORIO



TIVOLI'S CREMA



TIVOLI'S WALNUT

**CROSS CUT
ANDES**

233"x478"

233"x233"

11w"x23"

3"

11w"x11"

w"



ANDES SILVER



ANDES SHELL



ANDES CAPPUCCINO

**VEIN
CUT**

ITALIAN

233"x478"

233"x233"

11w"x23"

3"

11w"x11"

w"



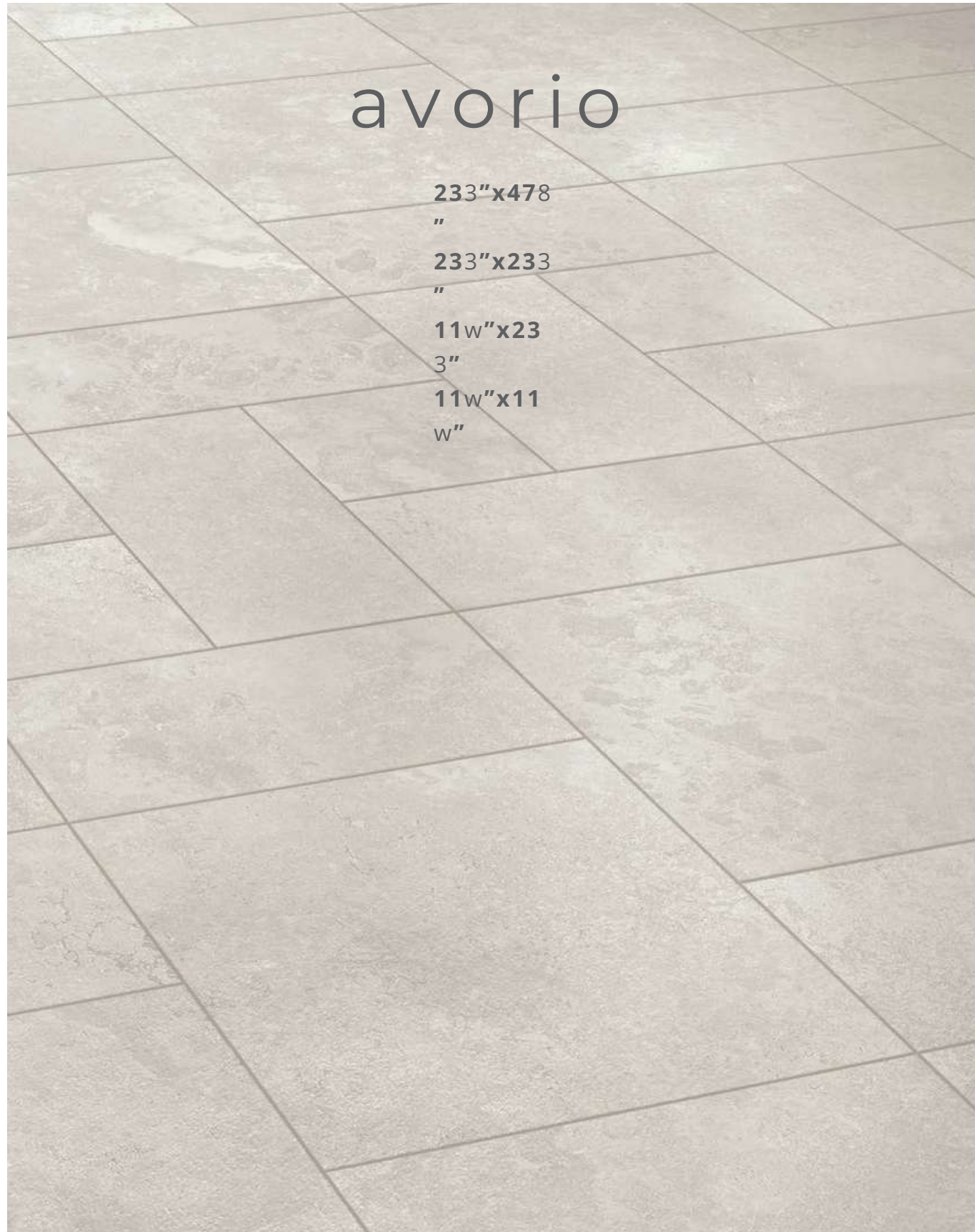
PEARL



RIVER

CROSS CUT
TIVOLI'S

FLOOR: TIVOLI'S AVORIO 233 "x233"



avorio

233"x478
"
233"x233
"
11w"x23
3"
11w"x11
w"





CROSS CUT
TIVOLI'S

avorio

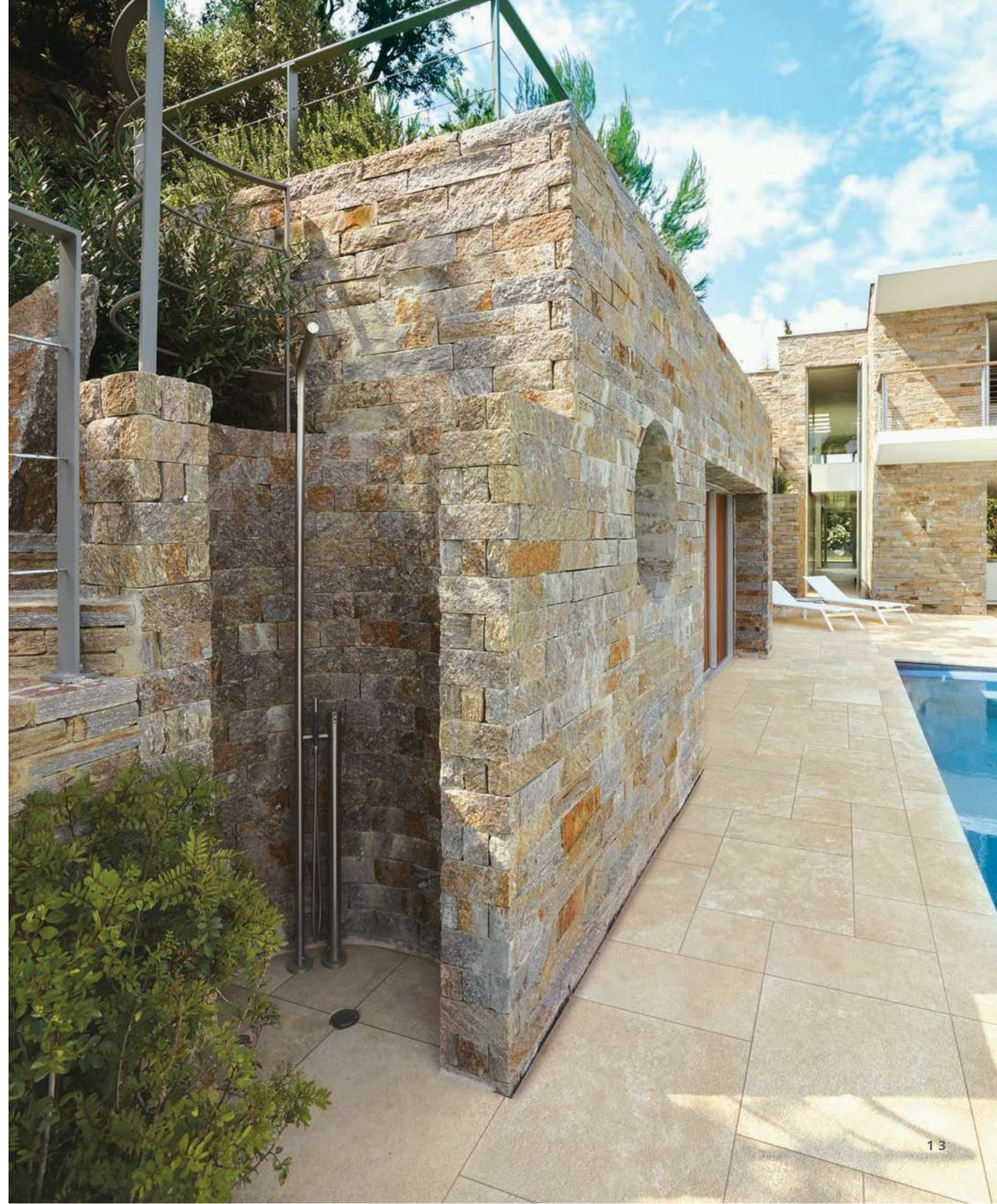
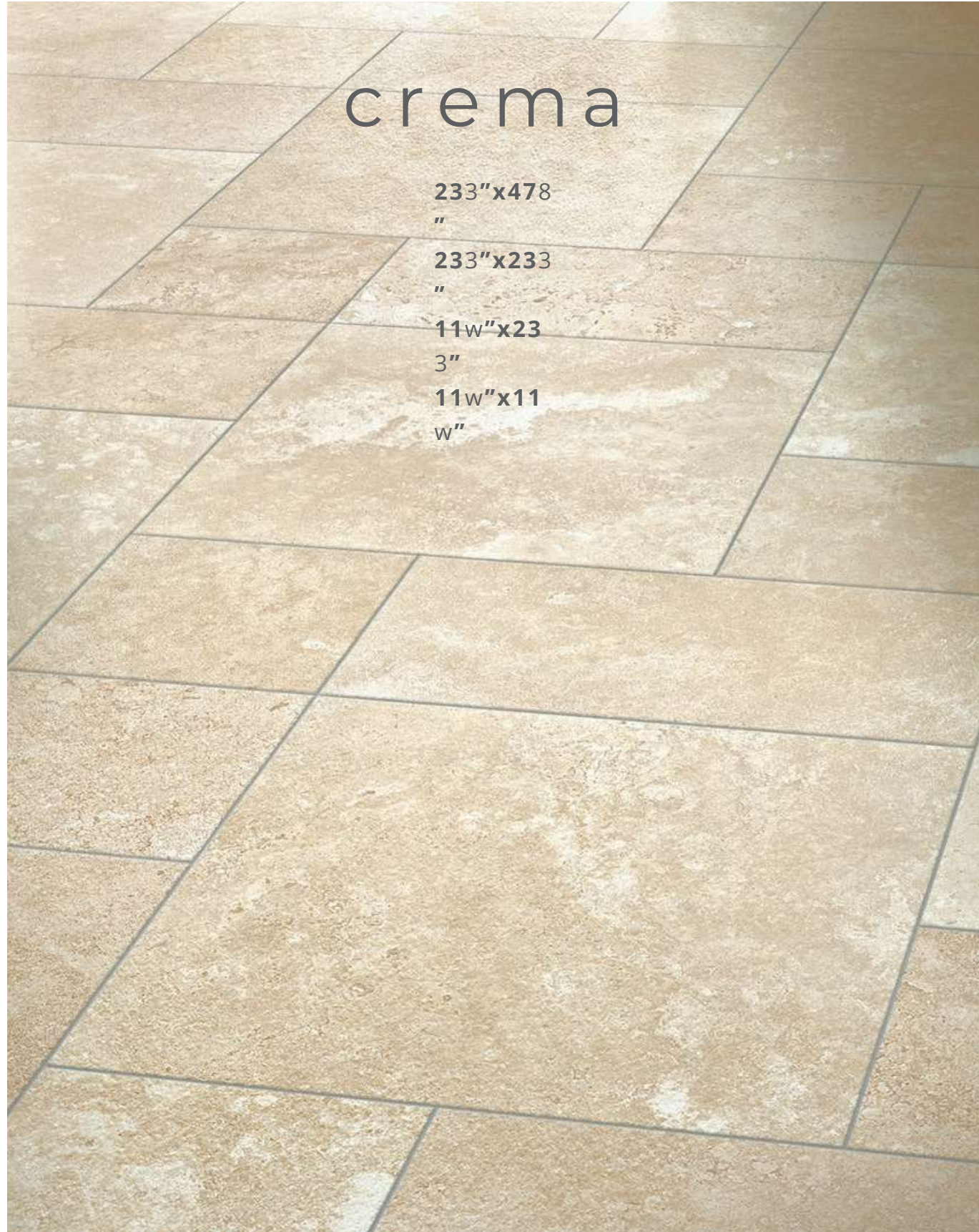
V3
moderat
e
variation

FLOOR: TIVOLI'S AVORIO 11w"x233"



CROSS CUT
TIVOLI'S

FLOOR: TIVOLI'S CREMA 233 "x233", 11w"x233", 11w"x11w"

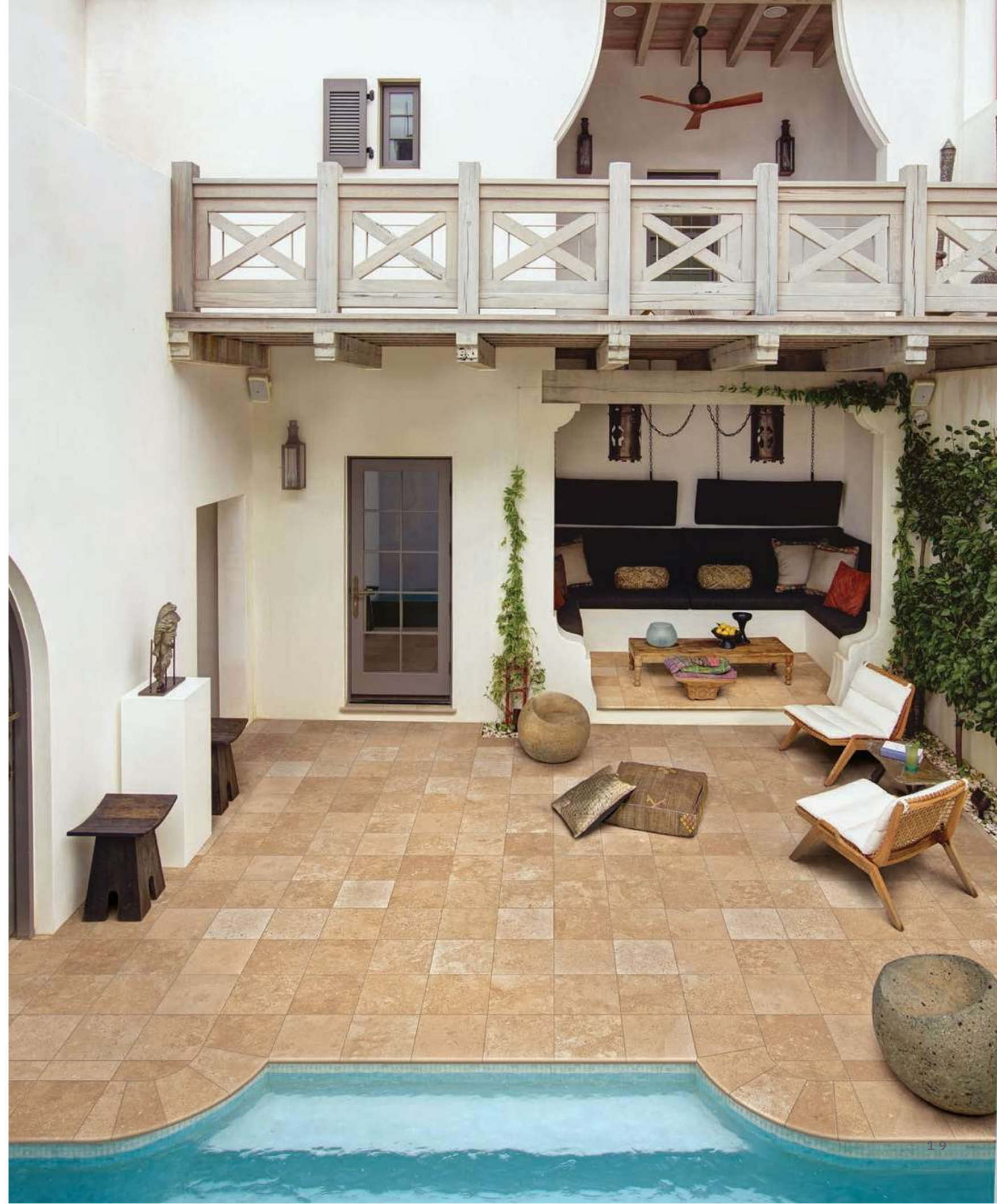
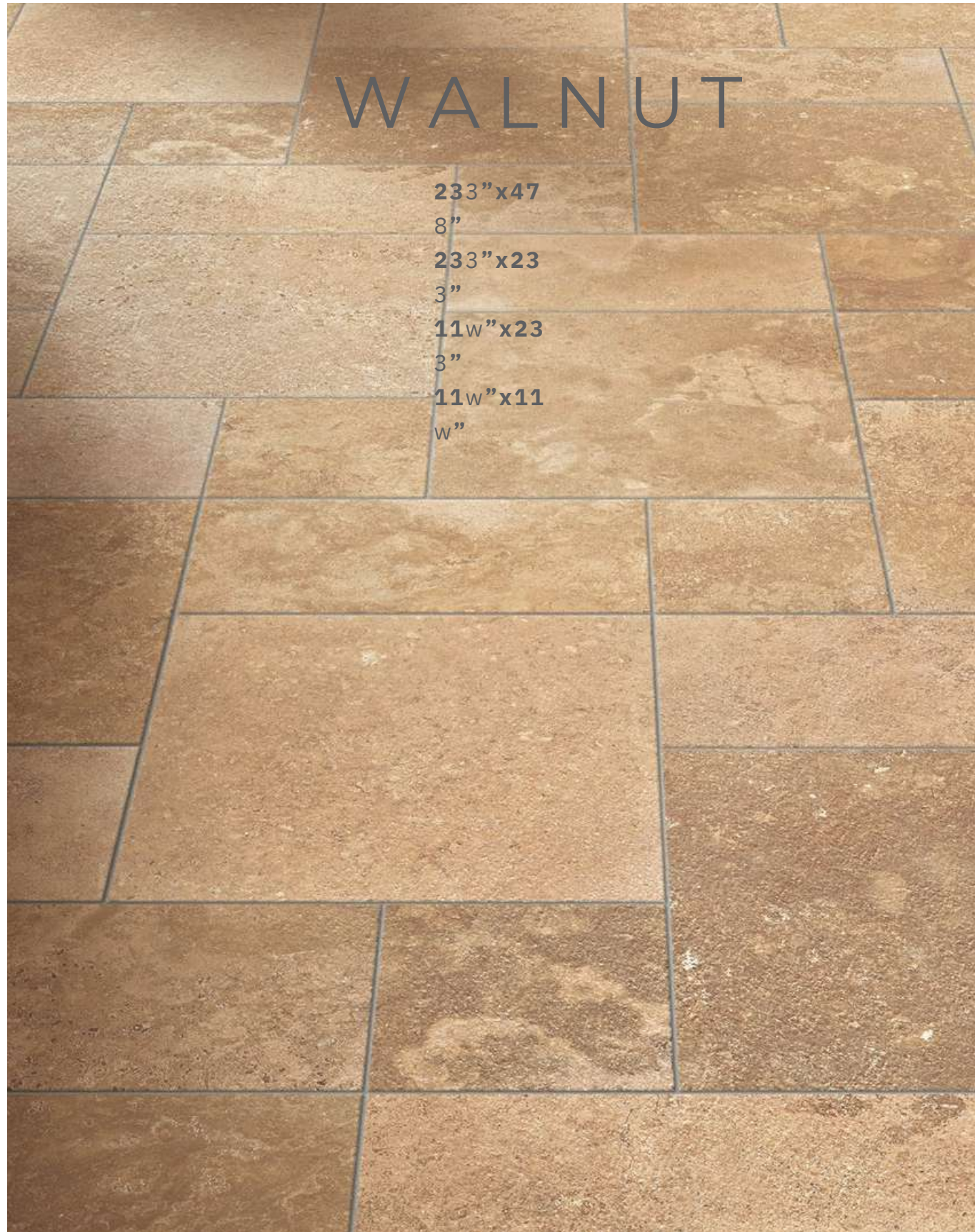






CROSS CUT
TIVOLI'S

FLOOR: TIVOLI'S WALNUT 11w "x11w"



CROSS CUT
TIVOLI'S

walnut



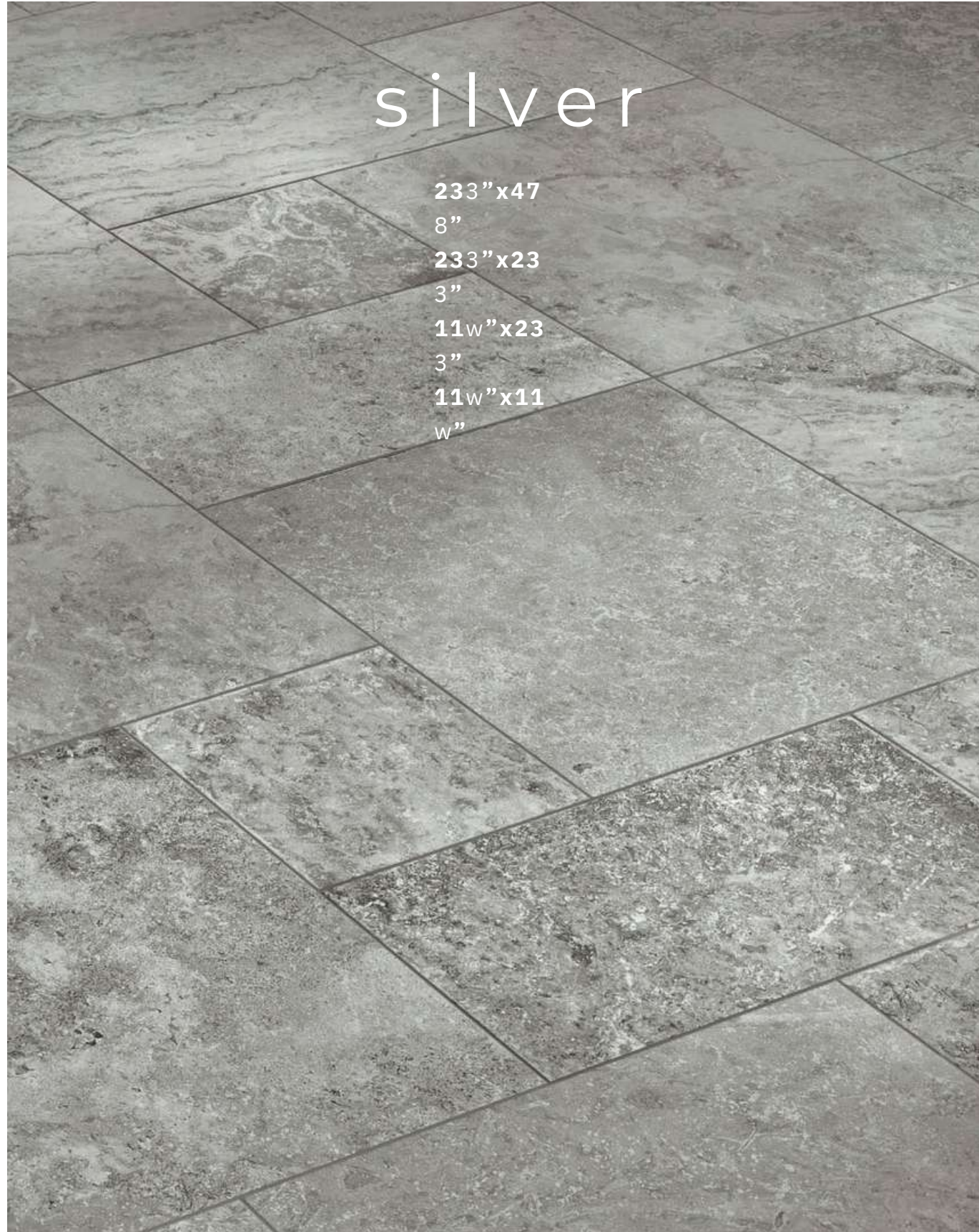
FLOOR: TIVOLI'S WALNUT 11w "x11w"





CROSS CUT
ANDES

FLOOR: ANDES SILVER 233 "x233"





CROSS CUT
ANDES

silver

V4
substantia
| variation

FLOOR: ANDES SILVER 233 "x233", 11w"x233", 11w"x11w"



CROSS CUT
ANDES

FLOOR: ANDES SHELL 233 "x233"





CROSS CUT
ANDES

shell

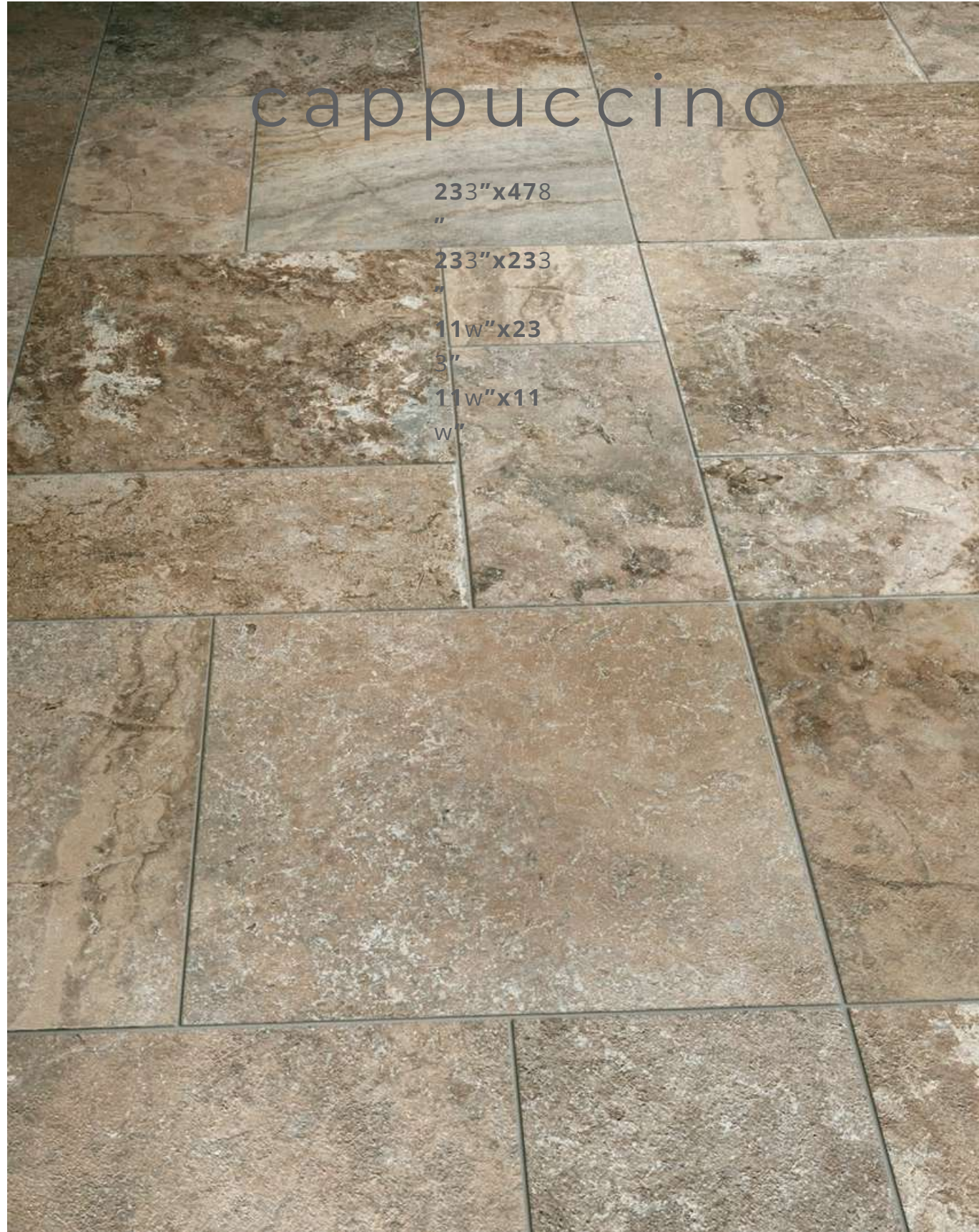
V4
substantia
| variation

FLOOR: ANDES SHELL 233 "x233"



CROSS CUT
ANDES

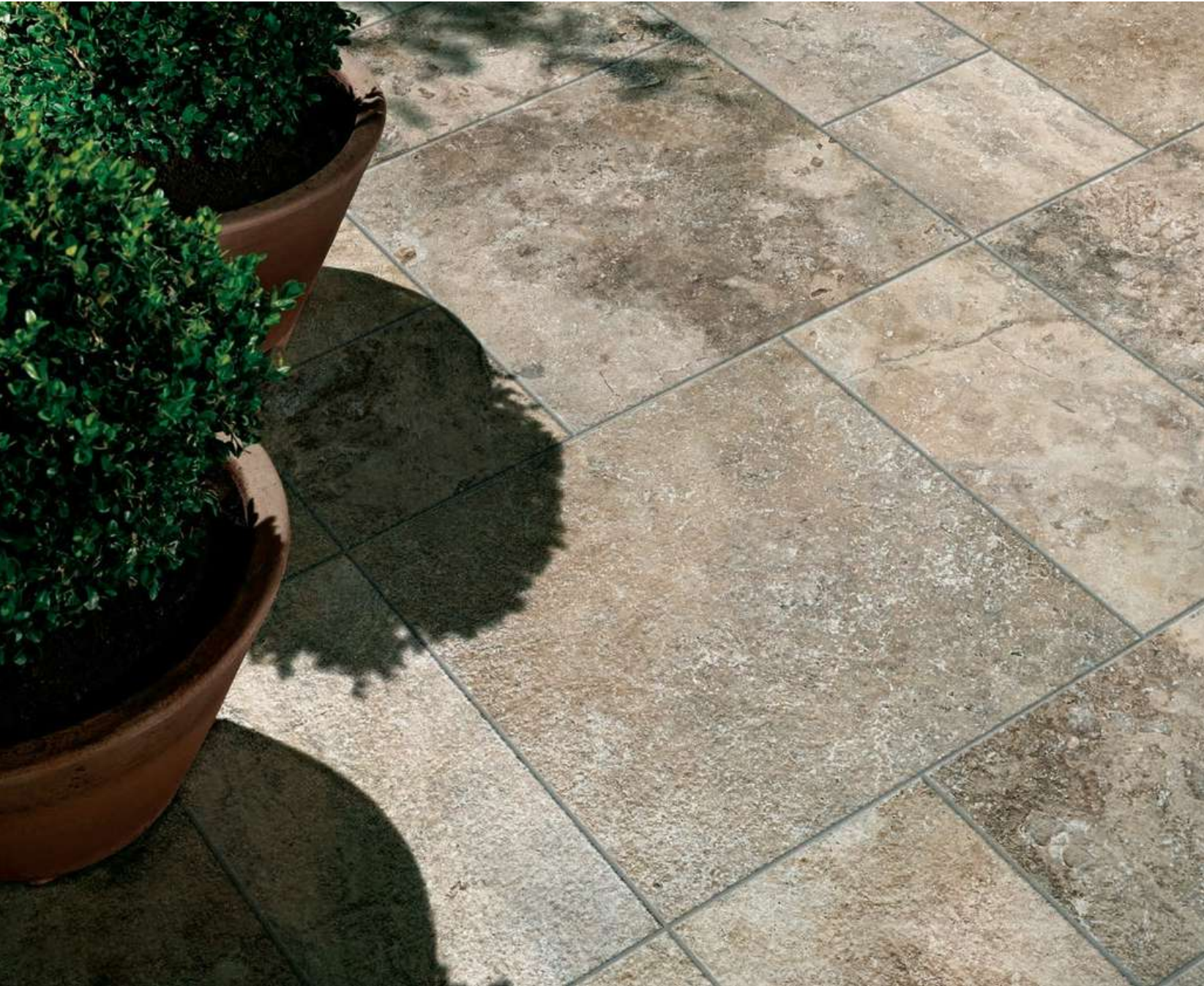
FLOOR: ANDES CAPPUCCINO 233 "x233"





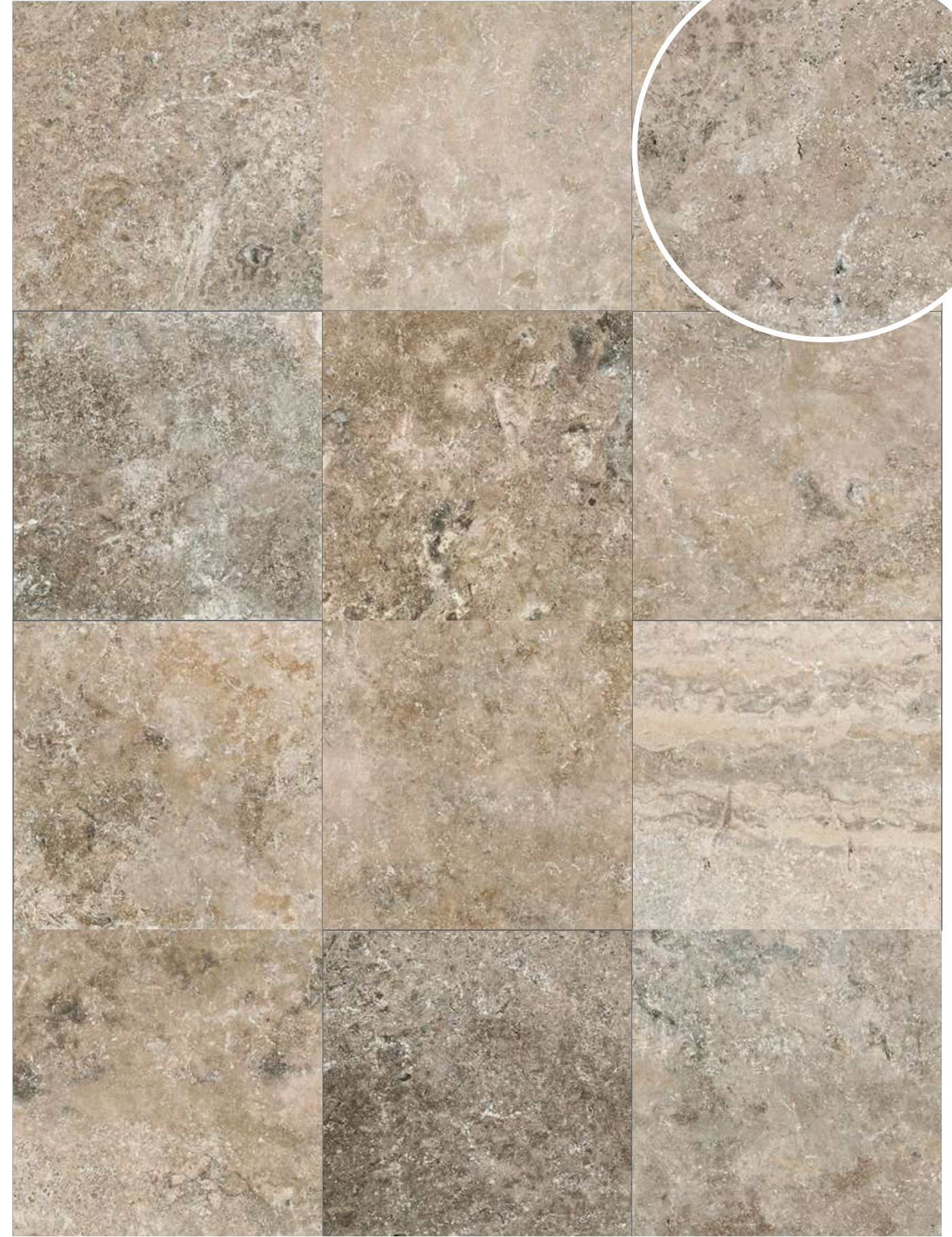
CROSS CUT
ANDES

cappuccino



V4
substantia
l variation

FLOOR: ANDES CAPPUCCINO 233 "x233", 11w"x233", 11w"x11w"



VEIN
CUT
ITALIAN

FLOOR: PEARL 233 "x478"





VEIN
CUT
ITALIAN

pearl



V2
slight
variation

WALL: PEARL 233"x233", V11"x23"
FLOOR: PEARL 323"x47"



VEIN
CUT
ITALIAN

FLOOR: RIVER 23"x48"
WALKWAYS: 23"x23"



VEIN
CUT
ITALIAN

river

WALL: 233"x233", 11w "x233", 233"x478"



VEIN
CUT
ITALIAN

river

V2
slight
variation

STAIRS AND POOL EDGE: RIVER 11w "x233"





233"x478" rectified
 AVORIO US7969
 CREMA US7970
 WALNUT US7971



233"x233" rectified
 AVORIO US7954
 CREMA US7956
 WALNUT US7955

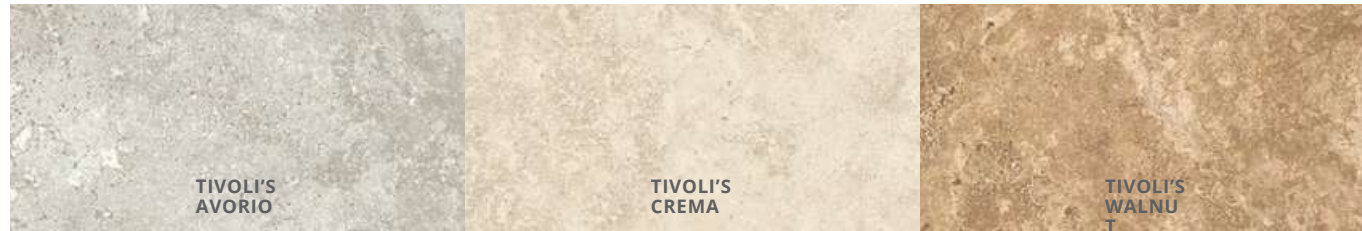


11w"x233" rectified
 AVORIO 1100460
 CREMA 1100462
 WALNUT 1100461



11w"x11w" rectified
 AVORIO US7960
 CREMA US7962
 WALNUT US7961

CROSS CUT TIVOLI'S



233"x478" rectified
 SILVER US7966
 SHELL US7967
 CAPPUCINO US7968



233"x233" rectified
 SILVER US7957
 SHELL US7958
 CAPPUCINO US7959



11w"x233" rectified
 SILVER 1100463
 SHELL 1100464
 CAPPUCINO 1100465



11w"x11w" rectified
 SILVER US7963
 SHELL US7964
 CAPPUCINO US7965

CROSS CUT ANDES



233"x478" rectified
 PEARL US7943
 RIVER US7945



23 3" rectified
 3"x23 US7908
 PEARL US7909
 RIVER



11w"x2 3" rectified
 3 PEARL 1100015
 RIVER 1100016



11w"x11" rectified
 w PEARL US7944
 RIVER US7942

VEIN CUT ITALIAN



SHADE VARIATION



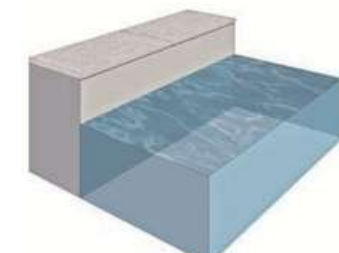
SPECIAL PIECES

DOUBLE BEVEL COPING / FULL BULLNOSE COPING

W 3"x23"
 Available in all colours.

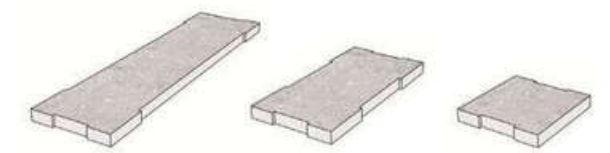


W 3"x23"
 Available in all colours.



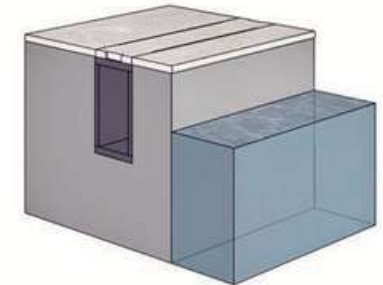
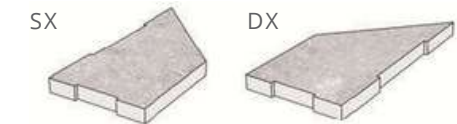
BLIND GRID

6"x24" rectified / 6"x12" rectified / 6"x6" rectified
 Available in all colours.

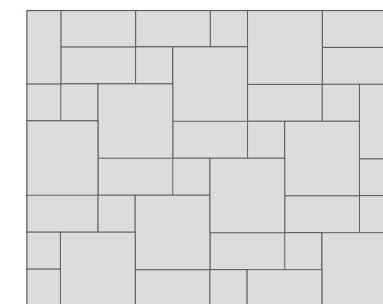


BLIND GRID ANGLE

6"x6"x12" rectified
 Available in all colours.

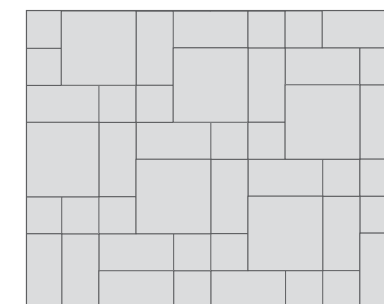


PATTERNS



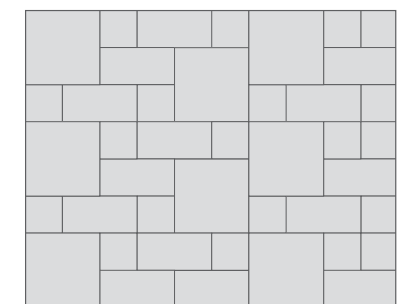
A LAYING SOLUTION

Nr.	1	2 3"x233 "	57,2%
pcs	Nr.	3 w"x233 "	28,5%
1	pcs	1 w"x11w	14,3%
Nr.	1	1	
pcs	1		
		1	



B LAYING SOLUTION

Nr.	1	2 3"x233 "	40%
pcs	Nr.	3 w"x233 "	40%
2	pcs	1 w"x11w	20%
Nr.	2	1	
pcs	1		
		1	



C LAYING SOLUTION

Nr.	2	2 3"x233 "	44,5%
pcs	Nr.	3 w"x233 "	33,3%
3	pcs	1 w"x11w	22,2%
Nr.	4	1	
pcs	1		
		1	

PACKAGING

2.0 MONOLITHIC RECTIFIED CERAMIC TILE	Thickness	Unit / Box	SqFt / Box	Boxes / Pallet	SqFt / Pallet	Weight / Box M2	Weight / SqFt	Weight / Pallet (included)	Pallet Size
231/2"x471/8"	3/4	2	15,5	16	248	133,765 lb	8,630 lb	2,165 lb	29"x
231/2"x231/2"	"	2	7.75	36	279	66,10	8,530 lb	2,421 lb	49"
113/4"x231/2"	3/4	4	7,75	40	310	65,875 lb	8,5 lb	2,676 lb	42"x
113/4"x113/4"	"	5	4,85	45	218,25	41,50	8,55 lb	1,910 lb	42"
	3/4								42"x42"
	"								42"x42"

TECHNICAL CHARACTERISTIC

STANDARDS	CHARACTERISTICS OR PROPERTIES	COMPLIANCE WITH STANDARDS UNI EN 14411 G ASTM	DECLARED VALUE
ISO - 10545-3 ASTM - C 373-88	Water absorption	E < = 0.5 %	< 0.1 %
ISO - 10545-9 ASTM - C 484	Thermal shock resistance	Requested	Complies with standard
ISO - 10545-12 ASTM - C 1026	Frost resistance	Requested	Complies with standard
ISO - 10545-6 ASTM C - 1243-93	Abrasive wear	<175 mm2	139 mm2
ISO - 10545-2	Straightness / ASTM - C 485	+/- 0.75 % (+/- 1.8 mm)	Complies with standard
	Straightness / ISO - 10545-2	+/- 0.5 % (+/- 1.5 mm)	Complies with standard
	Thickness / ASTM - C 499	+/- 1.02 mm	Complies with standard
	Thickness / ISO - 10545-2	+/- 0.5 % (+/- 0.5 mm)	Complies with standard
	Length and width / ASTM - C 499	+/- 0.5 % (+/- 2.0 mm)	Complies with standard
	Length and width / ISO - 10545-2	+/- 0.6 % (+/- 2.0 mm)	Complies with standard
ISO - 10545-4 Bending strength in N (thickness > = 7.5 mm)	ASTM - C 648	> = 250 LBF Average	> = 225 LBF Individual
	ISO - 10545-4	> = 1300 Newton	> 13000
ASTM - C 650	Chemical resistance	As reported	Resistant
ISO 10545-14	Resistance to stain	-	5
ISO 10545-13	Chemical resistance	UB min.	UA ULA UHA
ISO 10545-8	Coefficient of linear thermal expansion	-	α=6.3x10-6 °C-1
ISO 10545-5	Impact resistance	-	0.88
EN 12825	Static load	-	Centre 9.6 Kn Centre point of sides 6.5 Kn Diagonal 8.19 Kn (CLASSE 3)
	Dymanic laod capacity - hand object impact test	-	Test not passed
	Dymanic laod capacity - soft object impact test	-	Test passed
	Dymanic laod capacity - soft object impact test	-	classe 14
EN 1339	Bendind strength - breaking force in N	Kn 14.38	CL 2
EN 12633	Slip resistance	> / = Ct1	R11
DIN 51130	Slip resistance	-	A + B + C min.
DIN 51097	Slip resistance	-	> 0.40
DM 236/89	Slip resistance	-	> 0.60 WET > 0.60 DRY
B.C.R.A.	Slip resistance	-	> = 0.42
Static coefficient of friction ASTM 1028-07 BOT 3000 Dynamic coefficient of friction (section 9.6 ANSIA.137.1-2012)	Slip resistance	-	A1 - A1 FL
EN 13501-1	Fire resistance	-	130 mph with no parapet 150 mpt with 12" high parapet
* TAS 108 FLORIDA BUILDING CODE WIND UP LIFT TEST	3/4" thick 24"x24" porcelain installed on fixed height pedestals and 45° wind angle was blow of at	-	

specstones

www.specstonesinc.com

415-684-1355

1500B Burke Ave. San Francisco