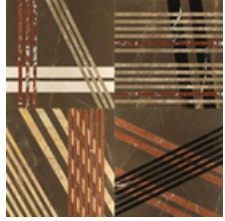


# LITHOS DESIGN

# NATURAL STONE

## Collections



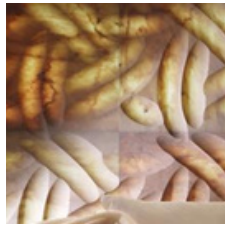
### Opus

An exciting modern - day expression of industrial stone design applied to the ancient art of inlay work.



### Drappi di Pietra

The sustainable lightness of stone claddings : five models characterized by the thin texture and the strong three-dimensionality typical of fabric drapery.



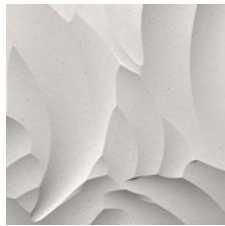
### Pietre Luminose

Stone brought to light : a seducing journey through the luminous texture of marble.



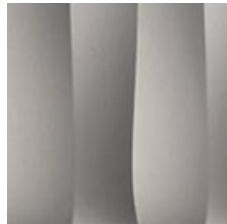
### Pietre Incise

Moving geometries, textures which are both charming and mutable, light games and optical effects : Lithos Design presents: Le Pietre Incise



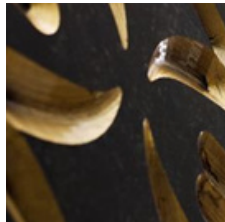
### Nuance

Captivating scenographic solutions playing with light and shadow contrasts in a spectacular scale of shades.



### Pietre Incise Palladio

A tribute to Palladio ´s genius, a prestigious line of claddings which merges echoes of the past with contemporary motifs.



### Luxury

Luxurious atmospheres, a contemporary reinterpretation of the chromatic effects of silver and gold.

## Description

Lithos Design was among the first companies on the market to choose as its own core business the creation and marketing of high-design marble and natural stone surfaces for interior decoration, producing on an industrial scale a wide range of strongly emotional stone design products, which are modular and, consequently, fit for any setting.